

# MY SHINY TEETH AND ME

Project By: Drew Parker & Asmita Tuladhar

How do teeth differ among carnivores, herbivores, and omnivores?

## GREY WOLF

(Carnivore)

They have 42 teeth in total. They have 12 incisors, 4 canine, and 10 molars. These animals have teeth well suited for hunting!



## WOLVES VS DOGS

Modern domestic dogs are descendants of wolves, so their similarities are no surprise. Although most dog breeds have the same ratio and number of teeth in their jaws, wolves have much higher bite force, thicker teeth, and more developed molars for crushing through the bone on their hunts.

### FUN FACT!

Incisors are for cutting through meat, canines are to hold on to prey, and molars are for crushing and mashing food



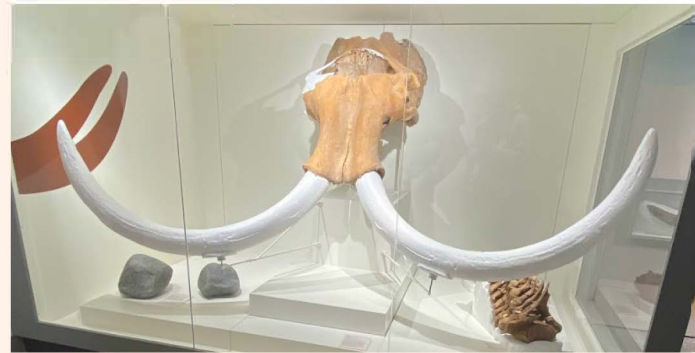
## MAMMOTHS

(Herbivore)

Mammoths have molars and incisors but no canines, indicating a meat-less, plant-based diet. The wear of the molars of mammoths also indicates the texture of the plants ate, with shallow valleys and blunt teeth indicating grassy diets versus deep valleys and sharp teeth indicating sharp twigs and ferns

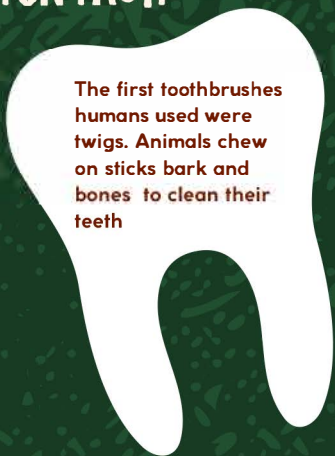
### FUN FACT!

Mammoth tusks are actually large incisors, but these teeth were used for defense and digging.



### FUN FACT!

The first toothbrushes humans used were twigs. Animals chew on sticks bark and bones to clean their teeth



Our teeth are not suited for the highly-processed, soft, sugary diet that most Americans eat now and they do not stimulate jaw growth



## HUMANS

(Omnivore)

Humans have incisors, canines, and molars. Because humans do not exclusively eat plants or meat, the kinds of teeth we have are a hybrid of a carnivore and herbivore. We have canines to anchor on to what we bite into, incisors to tear and shear through matter, and molars to grind up food similar to mammoths.

