

# THE CASE OF CONVERGENCE

Exploring "Evolution: Life Through Time" at UMMNH



What do all these animals have in common?

Pterosaur (TAIR-oh-sores)



photo credit: UMMNH

Dragonfly



photo credit: pixbay

Bat



photo credit: pixbay

They all have WINGS!

All of these animals have wings that look similar and allow them to do similar things, like fly! However, they are not closely related...

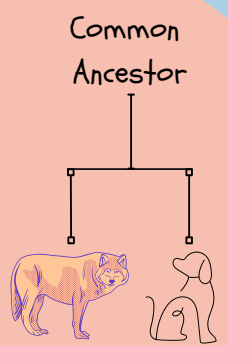
How is this possible?



CONVERGENCE!

None of these species are from the same family. This means that they do not come from the same common ancestor.

Types of animals share a common ancestor if they share a relative, like you and your cousin. For example, dogs and wolves have a common ancestor.



This fossil shows insect wings from about 300 million years ago!

photo credit: UMMNH



photo credit: UMMNH

This model represents a pterosaur that lived 67 million years ago!

This insect and pterosaur lived at different times in different places, yet they both developed wings. These similar structures, wings, were a result of these animals facing similar conditions in each of their environments, like weather and food resources. This process is CONVERGENCE.

Now that you understand convergence, think of other animals that share a body part/structure? Do they share this feature because they are related? Or is it a case of convergence?

Investigate it!