



SPECIAL PROJECTS

FUMMP has assisted with the following:

- The Mastodon display by Dr. Daniel Fisher in the Exhibit Museum at the University of Michigan
- The use of 3-D modeling software and a digital camera to document specimens in the Museum Collection
- The Bristle Mammoth excavation and soil sampling



The Bristle Mammoth Skull being raised in Chelsea, MI. The Friends helped fund heavy equipment rental for a second opening of this site resulting in additional bones for the Mammoth.

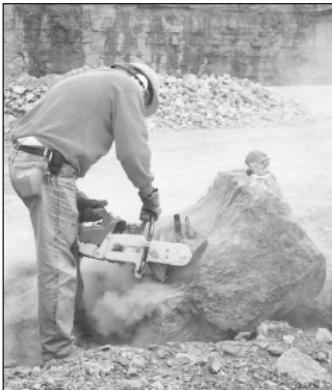
FIELD TRIPS

Fossil hunting takes FUMMP members from quarries to natural outcrops to lake shores.



What it takes to find the small ones!

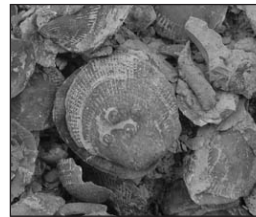
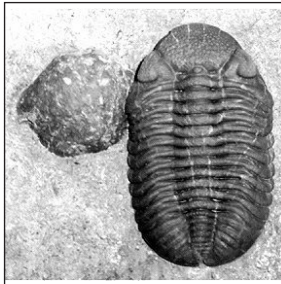
Sometimes it takes a saw to get fossils safely out of the rock in which they are preserved. Member Bob Carr powers through rock in Alpena, MI.



FOSSIL FINDINGS



Father and son, home from the hunt with a spectacular trilobite (close-up of prepared specimen below left)!



Brachiopods galore at the Alpena LaFarge quarry.



WHO WE ARE - The Friends of the University of Michigan Museum of Paleontology, more commonly known as “**THE FRIENDS**,” are a group united by their love of fossils.

Founded in 1971, “**THE FRIENDS**” support the activities, research, and study of fossils at the University of Michigan Museum of Paleontology.



The friends on recent collecting trip to Milan, MI. All ages represented.

MEMBERSHIP BENEFITS

- Opportunities to assist with the research of top-notch scientists at the University of Michigan's Museum of Paleontology
- Engage in public outreach at the annual ID Day at the museum
- Exclusive access to our field trips in limestone quarries, where the general public is not allowed
- Learn how to properly identify, prepare, and preserve fossils
- Member to Member auctions and sales



Mammoth skull (upside down) in U of M prep lab with Faculty and Friends listening to Dr. Fisher explain details of the skull's preparation.

TYPES AND FEES

An individual or family membership is \$20 annually. A family membership allows multiple members of the same family to join (with only one vote at meetings/elections).



Three generations of fossil hunters search for specimens in Milan, Michigan.



WANT TO JOIN?

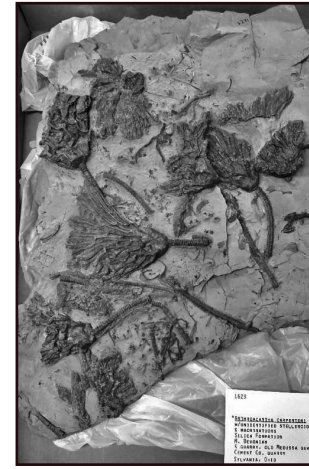
Attend a meeting to find out more information or contact us at: FUMMPinfo@gmail.com

The FUUMP typically meets the first Friday of most months (contact us for the schedule). Meetings begin at 7:30 p.m. at the Research Museums Center at the University of Michigan in Ann Arbor (see map below; August and December events are typically held elsewhere). There are no meetings in January.



RESEARCH MUSEUMS CENTER (RMC)
3600 VARSITY DRIVE, ANN ARBOR, MI 48108

FOSSILS OF THE MICHIGAN BASIN SPECIMEN DATABASE

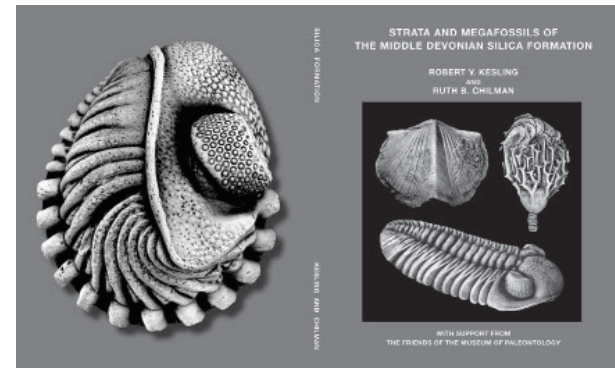


Rare crinoid and starfish plate. Purchased from a private collector by the Friends to add to the U of M Museum collection.

This searchable archive of fossils currently consists of ~1500 images for ~700 taxa. It showcases Michigan Basin fossils from our members' private fossil collections and select specimens from the University of Michigan collection, including type specimens. This archive also links to Deep Blue and the Paleobiology Database as educational resources for the fossils within. It can be accessed via the

following URL: <http://michiganbasinfossils.org/>

Reprint of the original Silica Shale book



Strata and Megafossils of the Middle Devonian Silica Formation
by Robert V. Kesling and Ruth B. Chilman

Originally printed in 1975 the Silica Shale book is an excellent guide for the field. Purchasing information can be accessed:

<http://www.crinus.info/silica.html>