

# NAM CENTER FOR KOREAN STUDIES

University of Michigan



2014-2015 Newsletter

**INSIDE :**  
Korean Studies  
Undergraduate  
Exchange Conference  
Minhwa at Michigan  
Perspectives on  
Contemporary Korea:  
Hallyu 2.0 volume

# From the Director

Dear Friends of the Nam Center:

The notion of *opportunity* underlies the Nam Center's programming. When brainstorming ideas, setting goals for an academic or cultural program, and putting in place specific plans, it is perhaps the ultimate gratification that we expect what we do at the Nam Center to provide an opportunity for new experiences, rewarding challenges, and exciting directions that would otherwise not be possible. **Peggy Burns**, LSA Assistant Dean for Advancement, has absolutely been a great partner in all we do at the Nam Center. The productive partnership with Peggy over the years has helped



Nojin Kwak

open many doors for new opportunities. It was recently announced that Peggy would leave her post in mid-October to become the Senior Vice President for Philanthropy for the Henry Ford Health System. Peggy certainly deserves many congratulations for this transition, but all of us at the Nam Center will terribly miss her guidance, leadership, and friendship.

The Nam Center continues to be a gateway for cutting edge scholarly and cultural programs in Korean studies. Now underway

are the preparations for the three conferences that the Nam Center hosts annually. On November 7 and 8, the **4th International Conference of Perspectives on Contemporary Korea** will be held. This year's Perspectives conference is themed, "*Cultures of Yushin: The 1970s in South Korea*," and will feature as the keynote speaker Professor Myong Kwan Chi, who is a former editor of *Sasanggye* and authored, under the pseudonym, T.K. Sei, the influential column, "Dispatches from Korea," for the Japanese monthly *Sekai* in the 70s and 80s. The **International Conference of NextGen Korean**



## In This Issue

Korean Studies Undergraduate Exchange Conference	3
Minhwa at Michigan	4
Hallyu 2.0	5
New Acquisition of Painting by Park Su-geun	6
NEKST Conference & U-M/SNU Graduate Student Exchange Program	7
Sang-Yong Nam Award & Memorial Lecture	8
Perspectives on Contemporary Korea conferences	9
KLP and Asia Library; CIC Korean Studies e-School	10
Chuseok Dae Party	11
Korea from "A Single Shard"	13
Student and Alumni News	14-15
Faculty and Staff Updates	16-17
Upcoming in 2014-2015	18-19

**Studies Scholars** (NEKST) will be held on May 8-9 of 2015. In its third year, the 2015 NEKST conference will be a forum for scholarly exchange and networking among Korean Studies graduate students. On May 21st of 2015, the Nam Center and its partner institutions in Asia will host the **New Media and Citizenship in Asia** conference, which will be the fourth of the conference series. The Nam Center's regular colloquium lecture series this year features eminent scholars from diverse disciplines.

This year's **Nam Center Undergraduate Fellows** program has significantly been expanded and enhanced. Fourteen students have been selected by application as undergraduate fellows, and the fellows program is administered as a seminar with classroom sessions and academic requirements for credits. As part of the seminar, students are eligible to present a research paper at the **Korean Studies Undergraduate Exchange Conference** to be held at the University of Southern California Korean Studies Institute on February 14, 2015. The **Summer in Korea** program will go into its third year. This popular study abroad program has become so competitive that the Nam Center started implementing personal interviews as part of the selection process. Summer in Korea is funded by the generous gift from Chairman Dae-Won Moon.

Following on the success and popularity of the **Minhwa at Michigan** past academic year, the Nam Center will present another multi-faceted program on Korean traditional culture on February 5-8, 2015. Two prominent scholars and players of traditional musical instruments, Kyoung Sun Cho (Geomumgo, Seoul National University of Education) and Seungmi Suh (Daegeum, Gyeongin National University of Education), will offer lectures, hands-on workshops, and concerts at several venues with diverse audiences, including the U-M School of Music, the Ann Arbor Public Library, the University Museum of Art, a local high school, and the Detroit Institute of Art. Other cultural programs, including **Korean Cinema Now** and the **Ann Arbor Korean Independent Film Festival**, build on their established audiences.

The **CIC Korean Studies e-School** is on a solid path. Thanks to the support from the Korea Foundation, twelve CIC member universities participate in the course sharing project, and during the current academic year, a total of eight Korean Studies courses are to be shared. The Korean Studies e-School is considered exemplary in many aspects and represents a significant portion of the CIC-wide collaboration on course sharing, accounting for 70% of all CourseShare enrollment. The Nam Center as the administrative hub of the e-School plays a central role.

The Korean Studies program at U-M welcomes **Jaeeun Kim**, the Korea Foundation Assistant Professor (Sociology), and **Hyun-ju Kim**, a new KLP faculty member. Professor **Sangjoon Lee** of Screen Arts and Cultures accepted a faculty position at Dankook University, Korea, and I wish the very best for next chapters in Professor Lee's career. This year's Korea Foundation Graduate Fellow is **Minna Lee** (Asian Languages and Cultures), and the Academy of Korean Studies Graduate Fellow is **Joon Sung Lee** (Kinesiology). I also welcome Professors **Jung Hyun Kim** (Chung-Ang University) and **Jae In Cho** (Inchon National University) to the Nam Center family as visiting scholars.

Nojin Kwak



# Korean Studies Undergraduate Exchange Conference

The Korean Studies Undergraduate Exchange Conference organized jointly by the Nam Center and the Korean Studies Institute at the University of Southern California (USC) gives students who are interested in conducting original research on Korean studies the opportunity to formalize their ideas in a paper presented to other undergraduate students. The conference is held annually and the location alternates between Ann Arbor and Los Angeles. This year, the conference was held on February 8 in Ann Arbor, and some of the students who traveled to Michigan from California experienced falling snow for the first time in their lives as well as other, more intellectual, activities.

## Report by Nathaniel Schmall

"The Undergraduate Fellows Conference was a wonderful opportunity to conduct research on Korea with the help of the Nam Center staff and affiliates. My paper, entitled "Gay Identity and South Korean Film," was the most in-depth research I've yet to accomplish during my entire academic career, and it is currently working its way through the publication process. Not only was conducting the research and writing the paper intellectually stimulating, but presenting my results before an audience of USC and Nam Center faculty, staff and fellows was rewarding and unforgettable.

**"When I look back on my undergrad experience at the University of Michigan, this conference will no doubt be one of the most memorable moments for me."**

I'm very grateful to the Center for providing the magnificent dinners and socializing opportunities as well as part of the conference activities. I got to know the Nam Center and the fellows better and I consider these personal connections I have made a valuable part of the experience. Directly after the conference, I thoroughly enjoyed the Minhwa demonstration. It provided catharsis at the perfect time, and I couldn't have personally chosen a more relaxing activity after the intensity of the conference. When I look back on my undergrad experience at the University of Michigan, this conference will no doubt be one of the most memorable moments for me."

**Bottom photo: Back Row (L-R): Do-Hee Morsman, Mi-Eun Kim, Gracie Soignet, Linda Kim, Caroline Koo, Nathan Schmall, David Kang, Skye Huerta, David Yang, Jay Choi, Sam Yoo, Michael Welch, Chang Soo Song**

**Front Row (L-R): Isobel Brown, Susan Yang, Patricia Park, Briahna Anders, Annes Kim, Jung Ye Nam, Nojin Kwak, Byung-Mo Chung, Yong Il Kwon**



## Minhwa at Michigan

This year's Nam Center signature event, *Minhwa at Michigan*, featured a short-term residency by master artists Chang Soo Song and Jung Ye Nam. Planned to coincide with a lecture by Professor Byung-Mo Chung, (Gyeongju University) the Nam Center was host to a series of events celebrating the art and practice of Korean folk painting from February 6 - 8, 2014.

Members of the Minhwa Artists Association generously loaned works of art to the Center for a week-long exhibit on contemporary Korean folk art in the Michigan League Lobby. In partnership with the Asia Library, Professor Byung-Mo Chung delivered a lecture titled "The Janus of Tiger: Korean Decorative Painting, Magpie and Tiger" in the Hatcher Graduate Library Gallery. This was preceded by a donation ceremony where the two artists, each generously donated a work of art to the Center. A video of the lecture is available to view at the U-M Library and Center websites.

Mr. Song and Ms. Nam took their talents and supplies to teach the techniques of Minhwa in a series of hands-on demonstrations to local students at Pioneer High School, students at the U-M Residential College at East Quad, students at Michigan State University, participants at the Korean Studies Undergraduate Exchange Conference, and the general public at the Museum of Art (UMMA).

The demonstration at UMMA was preceded by a gallery experience at the Woon-Hyung Lee and Korea Foundation Gallery of Korean Art. The Gallery displayed a multi-panelled screen of *Lotus and Carp* on loan that was the basis of a curator talk by Natsu Oyobe, with remarks by Prof. Chung, about Minhwa and its place in Korean culture.

**Top Row: KLP faculty member, Kyongmi Park hard at work, U-M student with her completed fan, Chang Soo Song helps a student.**

**Middle Row: Professor Byung-Mo Chung, U-M Professors David Chung and Larry Cressman as Minhwa students, Curator Natsu Oyobe gives a gallery talk.**

**Bottom Row: MSU students with their finished projects, Jung Ye Nam explaining the symbolism of in Korean art.**



## Premier volume for Perspectives on Contemporary Korea in production now

**H**allyu 2.0: *The Korean Wave in the Age of Social Media* the seminal volume in the "Perspectives on Contemporary Korea" book series is in production now, soon be available for pre-order, and is expected to be available on shelves and in e-book format by spring 2015 for use in summer and fall classrooms.

*Hallyu*, literally "the Korean wave," is a term coined to describe the global popularity of South Korean popular culture. This book, edited by Prof. Sangjoon Lee and Prof. Markus Nornes, examines this fascinating phenomenon from a wide variety of perspectives.

An edited volume of essays by a collection of international scholars, *Hallyu 2.0* seeks to comprehend and interpret the meaning of this new and powerful cultural industry. Contributors explore the ways in which South Korean popular cultural products, focusing primarily on K-pop and televi-

sion dramas, have been circulated, disseminated, and consumed by audiences around the globe. It examines how South Korean popular cultural products are encountering new fans, markets, and consumers through social-media networks. And it investigates how we interpret, analyze, and forecast this unprecedented cultural phenomenon.

*Hallyu* is entering the new age of social media. In recent years, Facebook, Twitter, YouTube, and myriad social networking websites have boosted the dissemination of South

Korea's popular media contents to regions where traditional media—theatrical distribution, broadcast networks, and DVD/VCD sales—had never reached previously. South Korean films, TV dramas and variety shows, online games, comics, and popular songs are now being shared, distributed, and consumed in cyberspace at an unparalleled pace.

*Hallyu* has recently come into its own as a subject of academic inquiry and broad intellectual interest. However, while much attention has been paid to the impact of the Korean Wave on South Korea's national im-

age or domestic economy, as well as its implications for transnational cultural flow, *Hallyu 2.0: Korean Wave in the Age of Social Media* is the first book to seriously investigate the impact of new communication technologies, particularly social media. Keep checking press.umich.edu to pre-order your of the flagship volume of this groundbreaking,

interdisciplinary series.

"Perspectives on Contemporary Korea" is devoted to interdisciplinary scholarship that advances the understanding of critical issues in contemporary Korean society, culture, politics, and economy. Based on popular conference series by the same name, and edited by Prof. Nojin Kwak and Prof. Youngju Ryu, the series is sponsored by the Nam Center with help from the Academy for Korean Studies, and published by the U-M Press.

### Hallyu 2.0 The Korean Wave in the Age of Social Media



Edited by Sangjoon Lee and Abé Mark Nornes



**Park Su-geun, People on the Street, 1962, oil on canvas, University of Michigan Museum of Art, Gift of the Joseph T. A. and Elise Choy Lee Family, 2013/2.525**

## New Acquisition of Painting by Park Su-geun

*Natsu Oyobe, Associate Curator of Asian Art, University of Michigan Museum of Art*

In Fall 2014, the University of Michigan Museum of Art (UMMA) will unveil a painting by painter Park Su-geun (1916–1964) from October 13, 2014 to January 11, 2015. The work, titled “People on the Street”, will be featured as part of UMMA’s ongoing In Focus exhibition series, which allows the Museum to showcase newly acquired works to the collection. Park Su-geun is one of the most popular, influential modernist painters in Korea. Largely self-taught, he focused on depicting farmers and ordinary people engaging in everyday activities. He used a distinctive technique to enhance the surface of his paintings, building them up by repeatedly layering and scraping the paint. This technique was developed after Park moved to Pyongyang in 1940, where he encountered archeological photographs in reports prepared by the Japanese. He was particularly fascinated by the Goguryeo period (37 BCE–668 CE) rock tombs of Anak and their wall paintings, which inspired his characteristic stone-like surface.

Because he did not receive a formal art education, Park Su-geun’s style is often considered naïve. It is more likely that he consciously deployed it to resonate with his subject matter. His interest in depicting ordinary people was initially kindled by quiet images of peasants by the French painter Jean-François Millet (1814–1875). This evolved into vision of modern Korea. The surface of *People on the Street*, coupled with the

minimalist rendition of five men engaging in a conversation, seems to suggest the perseverance of the people who lived through the difficulties of Japanese colonial rule (1910–1945) and then the devastations of the Korean War (1950–53).

This painting was recently gifted to UMMA by the family of the late Joseph T. A. Lee, who taught at the U-M College of Architecture and Urban Planning for more than three decades. In 1962, Professor Lee toured Korea with Elder Sang-Yong Nam, future U-M graduate student in urban planning and generous UMMA benefactor, who acted as his guide and translator. Lee purchased this painting by Park Su-geun because to him it embodied the quintessential characteristics of Korea and its people. UMMA is pleased to have this important modernist’s work in the collection, and to be able to make known the story of the wonderful friendship between these two unique and extraordinary individuals.

To commemorate the gift and the presentation, the Nam Center for Korean Studies and UMMA will co-host a lecture titled “Park Su-Geun, the Bando Gallery, and Selling Korean Contemporary Art at Home and Abroad, 1950s–1970s” by Christine Hahn, associate professor of Art and Art History, Kalamazoo College, on November 19 at 5 pm.

## 2nd International Conference of NextGen Korean Studies Scholars

*Irhe Sohn, PhD candidate, Asian Languages and Cultures*



In May of 2014, the Nam Center for Korean Studies hosted the annual International Conference of NextGen Korean Studies Scholars (NEKST). Co-organized by graduate students at the U-M, Seoul National University, and the University of Southern California, this second conference took place on May 16th and 17th. Eighteen graduate students from universities all



around the world came to Ann Arbor to give presentations on diverse topics ranging from the Joseon dynasty to colonial history, from literary translation studies to social scientific research on transnational Koreans. On the evening of the first day, instead of a traditional keynote speech, participants were welcomed by a film screening of *The Terror LIVE*

-in a cozy room with light refreshments-which facilitated discussions on contemporary South Korean society. Not only did this conference stimulate the intellectual exchange among graduate students from different countries and academic disciplines, but it also offered an opportunity for them to mingle and to share friendship and vision.



## Seoul National University – University of Michigan Graduate Exchange Program

*M-Eun Kim, MA, Piano Performance, School of Music, Theatre, & Dance*

The 2014 graduate exchange program between the U-M Nam Center and the SNU Woosong Korean Studies Fellows was held on July 16-18 in Seoul. Four U-M graduate students, Nora Hauk, Mi-Eun Kim, Joo Young Lee, and Irhe Sohn joined Susan Hwang and Michael Prentice, already in Korea for dissertation research, to participate in this three-day exchange. The program was organized with back-to-back events ranging from presentations by SNU professors, excellent presentations by Michigan graduate students, and a round-table discussion on the theme “삶, 실천: 글로벌시대에 한국학의 공공성을 다

시 묻다” (Knowledge, Life, Practice: Revisiting the Spread of Korean Studies in the Glocal Era). The academic sessions were informative and the discussion included direct feedback from the professors—who gave helpful advice on shaping arguments and situating thought-provoking questions and research within the larger framework of Korean studies. As for extracurricular activities, our SNU hosts organized an exciting agenda including a visit to the Kansong Art Exhibit at DDP, tea houses and restaurants and a final visit to Incheon Chinatown 근대문학관 (Museum of Korean Modern Literature).



**Museum of Korean Modern Literature (Incheon, Korea)**

# New Media and Citizenship in Asia

The third annual New Media and Citizenship in Asia 2014 ICA Preconference took place May 22 in Seattle, Washington. Forty scholars gathered to explore this year's theme: "Values, Digital Politics, and Civic Well-Being."

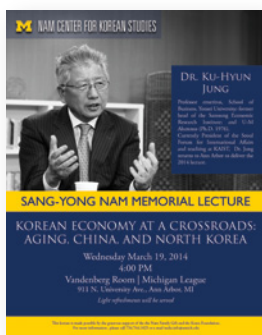
The conference series is planned to increase the visibility of Korea in the Asian and international contexts of the communication studies discipline. The International Communication Association (ICA) is the most influential organization in communication studies. Its international, annual meeting—to which the preconferences are attached—has been growing every year, and now typically draws more than 2,500 scholars from around the world. New Media and Citizenship in Asia is one of many daylong, topically focused preconferences. Speakers at this conference have represented countries including Canada, China, Denmark, Hong Kong, India, Indonesia, Japan, Korea, Malaysia, Singapore, Taiwan, the United States, and Vietnam. The format is panel presentations, some traditional and others high-impact, with rapid Q&A. The 2012 and 2014 preconferences have also included a methodology workshop relevant to the themes discussed.

Sponsors for this conference included WKW School of Communication and Information at Nanyang Technological University (Singapore), School of Journalism at Fudan University (China), Information and Society Research Division at National Institute of Informatics (Japan), and Department of Communication Studies at U-M. The conference is co-chaired by:

- Nojin Kwak (U-M Communication Studies)
- Marko Skoric (City University of Hong Kong)
- Natalie Pang (Nanyang Technological University)
- Baohua Zhou (Fudan University)
- Tetsuro Kobayashi (National Institute of Informatics)
- Scott Campbell (U-M Communication Studies)
- Junho Choi (Yonsei University)

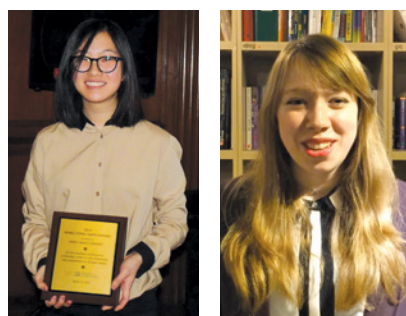
# Sang-Yong Nam Memorial Lecture

A standing-room only crowd was in attendance in the Vandenberg Room at the Michigan League for the third Sang-Yong Nam Memorial Lecture on March 9. The memorial lecture was delivered by Dr. Ku-Hyun Jung, U-M alumnus (PhD 1976), professor emeritus at Yonsei University, former president of the Seoul Economic Research Institute, and visiting professor at KAIST. Delivering a talk titled "Korean Economy at a Crossroads: Aging, China & North Korea," Dr. Jung addressed these three challenges to the future of Korean economic development and prospects. Following this lecture, audience members were able to engage the speaker in a lively Q&A session.



# Sang-Yong Nam Award Winners

The 2014 Sang-Yong Nam Award was given jointly to Mary Grace Soignet and Lyndsey Twining. As Nam Center Undergraduate Fellows, Asian Languages and Cultures majors specializing in Korea, and recipients of the Foreign Language and Area Studies



Mary Grace Soignet and Lyndsey Twining.

Fellowship to study in Korea, both students represent the dynamism of Korean studies among U-M undergraduates. In addition to their academic achievements, Gracie and Lyndsey were both actively involved in multiple Asia and Korea-related activities on campus, serving as executives of many student organizations that range from activism to cultural outreach. Gracie in particular distinguished herself with her passion for teaching and mentoring fellow undergraduates and K-12 students. Lyndsey's research accomplishments have been notable for an undergraduate student, participating in multiple exchanges and conferences on Korean studies in both the United States and Korea.



# (Re)-Discovering Sport in Korea: Guts, Glory and Geurimja



The third annual Perspectives on Contemporary Korea conference held Oct. 11-12, 2013 in Ann Arbor, Michigan, broke new ground by bringing a discipline—kinesiology—with no obvious or traditional connection to Korean studies to the field of play. Dae Hee Kwak (U-M Kinesiology), whose research concerns sports management, organized this conference together with Nojin Kwak, encouraging kinesiology scholars, along with scholars from other disciplines, to consider the case of Korea in their research. Twenty presentations—including five panel discussions and a keynote address by Joon-ho Kang, Michigan alumnus and Seoul

National University faculty—explored themes of value and creation; history, culture, and philosophy; policy and economics; and media. Gregory Cartee, associate dean for research at the School of Kinesiology, welcomed the group to the conference along with the conference organizers. Sponsors for the event included the U-M Nam Center for Korean Studies and School of Kinesiology, and the Academy of Korean Studies. Dae Hee Kwak will be joined by co-editors Mark Rosentraub (U-M Kinesiology), Inkyu Kang (Penn State University), and Yong Jae Ko (University of Florida) in preparing a volume for submission to the U-M Press.



# Conference on the 1970s in South Korea

"Cultures of Yushin" is the fourth annual Perspectives on Contemporary Korea conference on sponsored by the Academy of Korean Studies as well as the U-M Nam Center for Korean Studies and the Department of Asian Languages and Cultures. The conference, organized by Youngju Ryu (Asian Languages and Cultures), Nojin Kwak (Nam Center), and John Duncan (UCLA), will take place on November 7-8, 2014.

As the name of the constitutional reform that inaugurated South Korea's Fourth Republic (1972-79), Yushin has become synonymous with the second half of the Park Chung Hee era, when extreme political repression was coupled with total mobilization of society under the double imperatives of modernization and development. Existing scholarship on the period has focused on its political and economic dimensions, and given rise to such influential concepts



as "developmental dictatorship" (*gaebal dokjae*) and "mass dictatorship" (*daejeung dokjae*).

Moving beyond the era's political economy, the conference on "Cultures of Yushin" seeks to explore the remarkably rich and varied cultural production of the Yushin period in its dynamic, and often ambivalent, relationship to state power. Cultural production is broadly conceived to include literature, film, television, theater, music, art, architecture, animation, comics, advertising, fashion, and sports.

Previous conferences in the series have examined the phenomenon of Hallyu in the age of social media, transgressive practices in Korean society, and a contemporary examination of the history of sport in Korea.

## KLP News

Sangkyung Han, Korea Foundation  
Director, KLP

**D**r. Sangkyung Han, the Korea Foundation director of the Korean Language Program (KLP), continues to oversee the the direction of Korean language teaching at U-M. The strong demand for 1st year classes kept Professors Kyongmi Park and Hunjin Jung very busy this academic year. Furthermore, KLP faculty also formed a task force (Head: Kyongmi Park) during the spring semester to refine the language placement test used to assess students' Korean language proficiency and improve the accuracy of student progression through Korean language program.

KLP also continues to provide great opportunities for their students, such as the Korean language table and Korean tutoring program. Students are able to practice and apply what they learn inside the classroom, in a new context in groups as well as seek out one-on-one assistance. These opportunities also allow for relationships to form among the students taught by different KLP faculty.



**Nam Essay Contest Winners  
with Mrs. Moon-Sook Nam.**



**Annual KLP End-of-Year Event**

## Asia Library

Yunah Sung, Interim Head, Asia Library



**T**he Korean Studies collection at the Asia Library (<http://guides.lib.umich.edu/koreanstudies>) supports the teaching, learning, and research needs in burgeoning Korean studies in order to promote the understanding of Korea and its cultures. It provides access to Korean language materials in all formats including: books, journals, maps, e-books, e-journals, and visual materials. As of June 2014, the collection has obtained more than 55,000 volumes of print materials and has subscribed to primary electronic resources such as DBPIA, KRPIA, KISS, RISS International, and Choson Ilbo Archive. Major purchases of this year are the online versions of Chŭngbo Yŏnhaengnok ch'onggan (Enlarged Yeonhaengrok collections) and Han'guk chiri p'ungsokchi ch'ongsŏ (Records of Korea geography in historical custom) and over 700 DVDs.

The Korean Studies collection has been actively developing a visual material collection (DVD and Blu-ray) that includes feature films, television dramas, and documentaries which are located at Askwith Media Library (Shapiro Library Room 2002). Please search the library catalog, Mirlyn, for availability and detailed information regarding the materials.

Questions or purchase requests can be sent to [ask-korea@umich.edu](mailto:ask-korea@umich.edu).

## CIC Korean Studies e-School

**T**he Korea Foundation CIC Korean Studies e-School is well under way in the greater Mid-western region of the US, where twelve leading universities, members of the Committee on Institutional Cooperation (CIC), participate in the CIC Korean Studies e-School program.

After a pilot course involving U-M and Michigan State University in the first year (2012-2013), e-School has successfully expanded to offer a total of eight courses shared among ten schools in 2013-2014. During the second year of the e-School, a total of 228 students benefited from course sharing, finally being able to take Korean studies courses that have not otherwise been available on their campus.

Each e-School course is conducted as a group of campuses, one where the course is taught in a physical classroom, and up to two satellite classrooms where the professor teaches through videoconferencing technology. An important component of the e-School is its offline cluster visits, in which course instructors travel to meet with the videoconferencing students face-to-face. This allows the development of a student-faculty rapport that can be carried over the semester. Prof. Nojin Kwak, CIC e-School director says "Through e-School, our students not only have access to leading scholars in the field, but they are also learning with students across the Big Ten. When an idea or argument is being discussed at Michigan, students from Purdue or Minnesota can contribute to this, adding a valuable layer of how students understand and process the material." e-School strengthens the collaborative network of Korean studies programs and offers many benefits to universities across this young but fast-growing region in Korean studies.

## Undergraduate Fellows Program

**N**am Center Undergraduate Fellows are selected through an open application. The Fellows partake in monthly meetings that not only foster the Fellows' community leadership skills, but also encourage student's curiosity, critical thinking, and passion for Korean studies. A select group of fellows present papers at the Korean Studies Undergraduate Exchange Conference (see page 3). In preparation for the conference, opportunities to present and discuss students' research interests are organized, and peer-comments and critiques help those presenting at the conference to refine their research and presentations. Fellows also contribute significantly to the Center's outreach programs by acting as Center ambassadors for major events, including the Chuseok Dae Party, Quiz Bowl, A2KIFF, and the Korean Cinema Now film series.

### 2013-2014 Fellows

Briahna Anders  
Jaeyoung Choi  
Tina Choung  
Elise Huerta  
Skye Huerta  
Charles Inzucchi  
Annes Kim  
Yong Il Kwon  
Patricia Park  
Nathaniel Schmall  
Gracie Soignet  
Sara Stearns  
Michael Welch  
Sam Yoo

### 2014-2015 Fellows

Briahna Anders  
Jaeyoung Choi  
Jeniffer Garcia  
Yoolim Jung  
Firdaus Kasman  
Annes Kim  
Jie Ling Kuan  
Jennifer Kwon  
Hyun Jin Lee  
Hannah Sim  
Sara Stearns  
Hui Chien Tan  
Sam Yoo



## Chuseok Dae Party

**A**lmost 400 U-M students, faculty, staff, and Nam Center friends took part in the Chuseok-themed festivities on Sept 21, 2013 for the Center's annual community festival. Representing various Korea-related student groups on campus, volunteers distributed holiday food, helped visitors to play traditional Korean games and make Korean themed crafts, as well as performing Korean music and dances for guests. Guests also had a chance to wear hanbok and take photos of themselves dressed-up in traditional holiday clothes to remember this day.



## Professional Development Workshop for K-14 Educators



The Nam Center's fifth annual professional development workshop for educators, themed "Historic

Korea, Today" was held on August 23, 2014. This year, K-14 educators from all over Michigan were led in an in-depth examination of how Goryeo and Joseon culture contributed to the traditions and culture of Korea. Teachers learned about how they can use the arts and culture of the Goryeo era to not only teach students about Korea, but also to improve their reading comprehension and composition skills, and help their students build character traits such as patience and persistence through

inspiration from literature and the practice of art projects. Teachers had the opportunity to experience a hands-on demonstration of a Korean ceramic techniques with Carol Socks-Parker, a retired high school art teacher who has been leading the demonstrations with the museum tours for the last two years. Each teacher decorated a tile using the *sanggam* technique (sgraffito decoration), which were glazed and fired for the teachers to show off by John Leyland (Ceramics Studio Coordinator, Penny W. Stamps School of Art & Design).

The afternoon was filled with the sights, tastes, and sounds of the Joseon period. Chi-Hoon Kim (PhD candidate, Department of Anthropology, Indiana University) traced the history and development of the royal palace cuisine of the Joseon dynasty from the fall of the Korean Empire to contemporary practice.



This history was related to the development and growth of Korean nationalism and culture. This was followed by a hands-on activity where teachers learned aspects of Korean table manners and institutionalized ritual through the practice of *Jesa* table setting, used for ancestor memorial rites in Korea.



## U-M Korea Quiz Bowl

Jay Choi, Nam Center Undergraduate Fellow



The Nam Center was happy to welcome students, parents, coaches, and volunteers to the third annual U-M Korea Quiz Bowl, which took place on Saturday, February 22, 2014 at the Angell Hall on U-M's central campus. This year's competition composed of three divisions: middle-school heritage, high-school

heritage, and high-school non-heritage. In total, there were five Division II

middle school heritage teams, two Division III high school heritage teams, and two Division V high school non-heritage teams. A total of 32 students showed off their excellent knowledge of Korean culture and history.

After multiple rounds of competition, the first place awards were swept by the Kalamazoo Korean School led by Coach Seong-Hee Kim. First, second, and third place teams in all divisions were presented with medals and cash awards for their schools. Kalamazoo Korean School also received a rotating trophy for all three divisions that they will keep at their school until next year's competition.

**The first place awards were swept by the Kalamazoo Korean School led by Coach Seong-Hee Kim.**

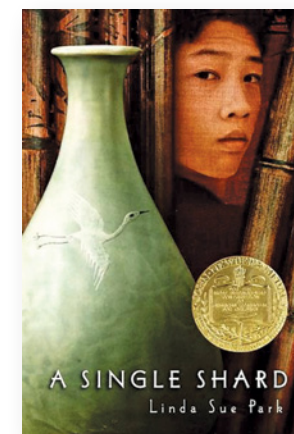


## Korea from "A Single Shard"

Four amazing teachers were recipients of this year's Korea from "A Single Shard" grant, which provides classroom resources, and a field trip experience at the University of Michigan Museum of Art (UMMA) for teachers to incorporate Korea into their teaching of Asia.

- Ms. Jacqueline Pecora, 7th grade social science at Monroe Middle School in Monroe
- Ms. Amy Frontier, 6th grade at Forsythe Middle School in Ann Arbor
- Mr. William Bowles and Ms. Tara Baker, Western International High School in Detroit

Students from these three schools traveled to Ann Arbor to take part in the field-trip portion of the program. In collaboration with UMMA, the students' visit included a docent-led tour of the Woon-Hyung Lee and Korea Foundation Gallery of Korean Art and other locations in the museum that contain ceramics related to Korean celadons. The field-trip also featured a



hands-on demonstration of the *sanggam* decorative technique that was so highly sought after in Goryeo era ceramics with retired high-school art teacher, Carol Socks-Parker. Each student was able to decorate a tile with a Korean-inspired motif, and empathize with the travails of Tree-Ear, the main character of the book "A Single Shard," that was the inspiration of the curriculum module.



Students from schools in Monroe, Detroit, and Ann Arbor participated in a *sanggam* demonstration and learned about Korean ceramics and celadons at UMMA.

## Student and Alumni News

### Korea Foundation Fellow

**Minna Lee** (PhD student, Asian Languages and Cultures) is a first year doctoral student



in the department of Asian Languages and Cultures at the University of Michigan.

Building on her previous work on North Korean art historical discourse on *chosŏn-hwa*, her current research focuses on the cultural politics of the Cold War. In particular, she is keen on exploring the relationship between photographic images and ideology in the post-Korean War era of national reconstruction in both North and South Korea. Prior to the University of Michigan, she completed her MA in East Asian Studies (2013) from the University of Toronto, Canada.

### Academy of Korean Studies Fellow

**Joon Sung Lee** is a PhD candidate in the U-M School of Kinesiology majoring Sport Management at the University of Michigan. He holds a BS in Physical Education and MS in Sport Marketing from Seoul National University in



South Korea. His research mainly focuses on overall sport consumer behavior with major emphasis on the influences of both cognitive and affective factors on sport

consumers' consumptive behaviors such as attitude formation and decision-making process within various sport contexts. Focusing on celebrity athletes' transgressions, his dissertation aims to further our understanding about how sport consumers process an athlete's transgression information and respond to the negative information in different ways based on the consumers' moral reasoning processes.

### SeAH-Haiam Arts & Sciences Scholarship Recipients

**Elizabeth Baskerville** (MLA candidate, MS Arch candidate) The SeAH-Haiam Arts & Sciences Scholarship funded Elizabeth's



research trip to Seoul in the summer of 2014, where she explored issues of geography and terrain, and their impact on ecological conservation, environmental justice,

and national identity. Connections made in Seoul spurred research related to landscape design for the Demilitarized Zone in Korea for the "Space Prize for International Students of Architecture Design" whose theme was "The Epoch of Space Politics: What to Do About the DMZ for Peace."



**Nora Hauk** (PhD Candidate, Anthropology) Thanks to the SeAH-Haiam Scholarship, Nora conducted interviews for her dissertation, which examines the intersection of

personal moral narrative and contemporary politics through the "lens" of digital photography. She conducted interviews specifically focused on visual media, exploring how young Seoulites involved in social movements commemorate their participation through photography and how young people interact with rural and urban spaces. Her research is focused on two communities of young Seoulites engaged in activism projects: 1) evangelical Christians involved in evangelism projects in rural areas of Korea, and 2) environmental activists involved in volunteer farm work and land protests (particularly related to the Four Rivers Redevelopment Project). While these groups may seem quite disparate, together they give a picture of the multiple ways that young people engage in social projects. The

goal of her dissertation is to explain how middle class young people have reacted to the Korean developmental paradigm in forging their own sources of subjectivity.

**Byungju Kang** (MA Sport Management, School of Kinesiology) With support from a SeAH-Haiam Arts & Sciences Scholarship, Byungju conducted research for his research project "Professional Team Sport Preference of Korean Consumers on Baseball and Soccer." His research focused on the impact of geographic location on consumer choices. Using data from 1,000 responses to an online survey and attendance data, the study examined the effect of geographic proximity -both of the region in which the subject lives, to that of their preferred team, and to that of rival teams- to establish whether teams in both the same sports and different sports can be seen as substitutes for each other. It seeks to tease out the relationship between geographic proximity and fan substitution with a primary data that rarely has been studied previously.

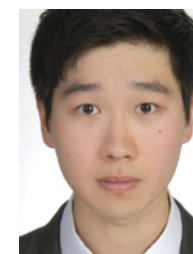


**Irhe Sohn** (PhD Candidate, Asian Language and Cultures) This summer, Irhe began his preliminary dissertation research in Korea and Japan through the SeAh

Haiam Arts & Science Scholarship. His research broadly investigates how cinema under the Japanese empire from the 1920s through the 1940s emerged at the intersections among different viewpoints, interests, and power relations. He spent most of his time in Seoul and Tokyo consulting archival materials in order to lay the groundwork for his dissertation project. Also, he attended an international conference titled "The Literature and Culture of Colonial Korea and the Discursive Space of Japanese Language" as a discussant which took place in Niigata, Japan in early July. During the time, he also participated the annual exchange program between SNU and U-M.

### SeAh Group Intern

**Jay Choi** (Junior, Economics) During summer 2014, Jay Choi, one of the students from the Nam Center for Korean Studies Undergraduate Fellows Program had the opportunity to intern as a Summer Analyst for SeAH Holdings, a subsidiary of SeAH Group



in charge of managing all the investment decisions for the conglomerate. Not only did he have the opportunity to apply what he learned into practice, but he also learned a great deal about the Korean corporate structure and culture ranging from corporate titles to formalities between colleagues. Furthermore, interacting with managers on a daily basis in casual and formal settings also allowed him to be more familiar with current issues in Korea such as privatization of the medical industry.

## Alumni News

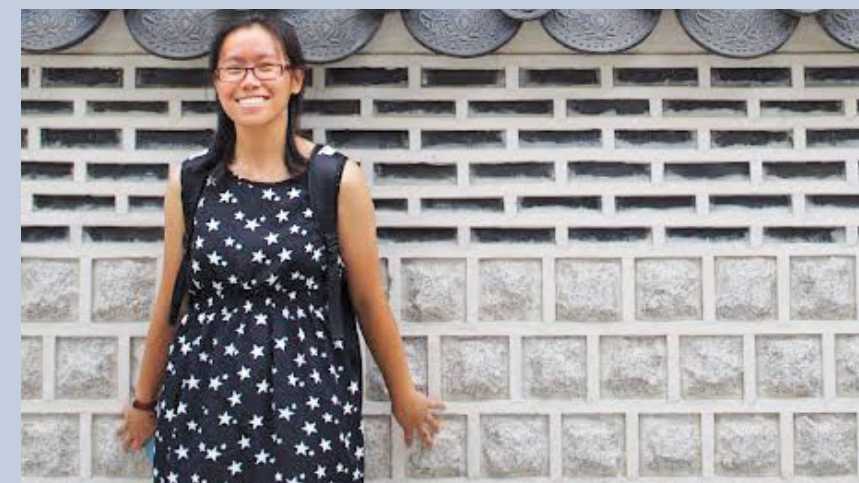
**BoRin Kim** (PhD 2014, School of Public Health) has started a tenure-track faculty position as Assistant Professor in the Department of Social Work, College of Health and Human Services, University of New Hampshire as of August 2014.

**Soo Young Bae** (PhD 2014, Communication Studies) has accepted a tenure-track position as assistant professor in the Department of Communication at the University of Massachusetts - Amherst.

**Jisu Ryu** (M Ed 2013) as been admitted to the University of Minnesota's Organizational Leadership, Policy, and Development program as a Ph.D. student.

## Summer in Korea Scholarship

Thanks to the generosity of Chairman Dae-Won Moon (MBA '78), the Nam Center offers two scholarships to attend the Yonsei International Summer School in Seoul, Korea annually. Students spend six weeks in the heart of Seoul to improve their fluency in Korean and deepen their knowledge of Korea. The scholarship also funds tuition, fees, field trips, and travel expenses, making a summer in Korea possible for University of Michigan undergraduates.



**Jie Ling Kuan** (Senior, Psychology and Linguistics) "Studying abroad in Korea has always been my ultimate dream and I am very grateful for the generous scholarship by Chairman Moon and the Nam Center for Korean Studies for making that dream a reality. This past summer, I had the opportunity to learn a great deal about the history, culture, and language of Korea while taking classes at Yonsei International Summer School. Aside from gaining knowledge in class, I was also able to relate to these knowledge through the firsthand experience of visiting places such as the War Memorial of Korea, the Korean Demilitarized Zone (DMZ), Jeju Island, and the MBC Dream Center. I even got to practice my Korean language and bargaining skills during the various trips to Namdaemun night market. All in all, spending the summer in Korea not only allowed me to substantially explore my interest in Korean Studies and to improve my proficiency in Korean language, it definitely contributed to one of my best memories in college."



**Sara Stearns** (Senior, Asian Languages and Cultures and Economics) "Thanks to the Nam Center and the generous support of Chairman Moon, I was fortunate enough to spend my summer attending Yonsei University. The program was six weeks in length, but I decided to make the most of this opportunity by arriving early to Korea and traveling around the country in order to experience firsthand the uniqueness of Korean culture. Once classes began, I took both English-taught courses for my academic majors as well as a Korean language

course. These courses furthered my understanding of Korean society and sparked my interest in the concept of multiculturalism, which I have chosen as my undergraduate research topic. I learned a great deal both inside and outside in the classroom this summer, and I met people from around the world who shared my desire not only to learn about Korea but to develop a greater understanding of the world in which we live."



# Faculty and Staff Updates

## Faculty

**Jaeun Kim** (Korea Foundation Assistant Professor of Sociology) received her PhD degree in Sociology from UCLA, was a postdoctoral fellow at Princeton and Stanford, and taught at George Mason University for a year. She specializes in political sociology, ethnicity and nationalism, and international migration and globalization. Kim is working on a book manuscript based on her dissertation, which has been awarded the 2013 Theda Skocpol Dissertation Award from the Comparative-Historical Sociology Section of the American Sociological Association. The book examines diaspora politics in twentieth-century Korea, focusing on colonial-era ethnic Korean migrants and their descendants in Japan and northeast China.



**David Chung** (Professor, Penny W. Stamps School of Art & Design) had his work featured in Houston during April 2014. Chung's mural-scale drawing "Ten Immortals" was shown at the Museum of Fine Arts Houston as part of the exhibition and festival, "My Voice Would Reach You". He was the Frank and Cindy Liu Distinguished speaker at Rice University and screened his new video work at the Rice University Gallery of Art. In June, Chung presented at the Sao La Art Space in Ho Chi Minh City, Vietnam. This summer, David Chung continued his teaching with Harvard University's study abroad program in Seoul with Ehwa Womans University.



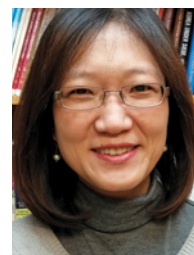
**Youngju Ryu** (Associate Professor, Asian Languages and Cultures) was promoted to associate professor in 2014. Along with tenure, she received the Class of 1923 Memorial Teaching Award. Ryu recently edited and contributed to *Imperatives of Culture: Selected Essays on Korean History, Literature, and Society from the Japanese Colonial Era* and is currently editing *Cultures of Yushin: The 1970s in South Korea*. Her upcoming monograph *Writers of the Winter Republic* will be published by the University of Hawai'i Press in 2015.



**Joan Kee** (Associate Professor, History of Art) was promoted to associate professor, with tenure, in 2014. She is curator of an exhibition at Blum & Poe (Los Angeles, CA) September 13 - November 8, 2014 titled "From All Sides: Tansaekhwa on Abstraction," based on her book, *Contemporary Korean Art: Tansaekhwa and the Urgency of Method* (University of Minnesota Press, 2013). Kee was also one of four finalists for the Charles Rufus Morey Award, which honors an especially distinguished book in art history by the College Art Association.



**Hyun-ju Kim** was appointed as Korean language faculty in Asian Languages and Cultures at U-M in Fall 2014. Kim received her PhD from the School of Education at University of Michigan. Prior to joining the KLP, she was involved in various projects in relation to adolescent literacy. Currently she is engaged in the grant project, "Looking at Others toward Mutual Understanding and Cultural Sharing in the School of Education." Her research interests are disciplinary literacy, multimodal literacy, social justice and equity in education, and multicultural education.



**Leea Allerdig** joined the Nam Center staff last October in the role of East Asia Cluster Manager. Her responsibilities include human resources, financial oversight and administrative operation for the Nam Center, Center for Japanese Studies, and Lieberthal-

## Visiting Scholars

**Jae In Cho** is assistant professor in the Department of Library and Information Science at Incheon National University. She is currently at the Nam Center as a one-year visiting scholar. Her research interests include academic library network for resource sharing and scholarly communication by open access publishing. Her current research is focused on comparative studies of a shared operation model of institutional repositories in Korea, the United States, and Japan.



**Jung Hyun Kim** is associate professor in the Department of Advertising & Public Relations at Chung-Ang University, Seoul, Korea. She received her PhD from SNU. Her areas of research interest include persuasion communication, new media and advertising effects. She has published papers in the Asian Journal of Communication, International Journal of Mobile Communication and Korean Journal of Advertising. While at U-M, she conducted research on "Cross-Media Marketing and Audience Engagement: A 2014 Case Study of Samsung at the Super Bowl and Hyundai Motors at the Oscars."



**Evan Vowell** is currently a Junior majoring in Political Science and International Studies: Political Economy and Development. He is a program assistant at the East Asian Centers at U-M and supports Centers' events and operations. Evan plans to pursue a international MBA upon graduation, with a special focus on East Asia. He is also a member of Student Democrats and has served on campaigns for both the 2012 and 2014 elections.



**Irene Ng** is currently an undergraduate at the U-M studying Mechanical Engineering and Art & Design. She has a love of various cultures, including Korean culture, and has previously studied abroad in Korea. Irene hopes to become a product designer in the future, and to incorporate her love of international cultures and various interests into her work.

**Soo Hyun Park** assumed responsibility for the Nam Center's outreach activities in March 2014. She has become familiar with the Center's many K-12 activities, and is excited for the planned programming for 2014-2015. She received her MA in Public Management at Carnegie Mellon University.



**Irene Ng** is currently an undergraduate at the U-M studying Mechanical Engineering and Art & Design. She has a love of various cultures, including Korean culture, and has previously studied abroad in Korea. Irene hopes to become a product designer in the future, and to incorporate her love of international cultures and various interests into her work.



**Evan Vowell** is currently a Junior majoring in Political Science and International Studies: Political Economy and Development. He is a program assistant at the East Asian Centers at U-M and supports Centers' events and operations. Evan plans to pursue a international MBA upon graduation, with a special focus on East Asia. He is also a member of Student Democrats and has served on campaigns for both the 2012 and 2014 elections.



**Leea Allerdig** joined the Nam Center staff last October in the role of East Asia Cluster Manager. Her responsibilities include human resources, financial oversight and administrative operation for the Nam Center, Center for Japanese Studies, and Lieberthal-



## Student Group News

**KISA** The University of Michigan Korean International Student Association is an organization to promote unity and the well being of Korean students. KISA is committed to inform and help prospective students of the University of Michigan to make a smooth adjustment to the new academic and cultural environment on campus. <https://maizepages.umich.edu/organization/kisa>

**KSA** The Korean Student Association is a student organization that strives to insure the well-being and interests of Korean and Korean-Americans and to promote the mutual understanding and harmony among people of all races, religions, and national origins. <https://maizepages.umich.edu/organization/ksa>

**KIUM** The Union for Korean Issues in Michigan continues to build the relationship between Korean culture and American culture on campus through various fun and educational events and debates. <https://maizepages.umich.edu/organization/kium>

**KBC MBA** Korea Business Club at Ross is a graduate student organization for those interested in Korean cultures, communities and businesses. KBC provides information, resources, tools and guidance to members for careers in Korea and promote a deeper understanding of Korean business culture within the Ross community <https://maizepages.umich.edu/organization/kbc>

**KSEA** The Korean-American Scientists and Engineers Association is a non-profit professional organization established in 1971 and has been working to promote the application of science and technology for the general welfare of society and to foster international cooperation especially between the U.S. and Korea. <https://maizepages.umich.edu/organization/ksa>

**KSAG** Korean Student Association Graduate at U-M is a nonprofit organization for Korean graduate students, fellows, and faculty to generate greater interaction within the community and to increase awareness about Korean culture. <http://umksag.com/>

**Kopitonez (A Capella)** Koptinoz is an Asian interest a cappella singing group at U-M. They sing a variety of music, originating from Korea, Japan, China, Taiwan, and more. <https://maizepages.umich.edu/organization/kopitonez>

**LiNK** Liberty in North Korea is a non-profit organization that strives to shift people's popular perception of North Korea from political policies to human rights issues. Our mission is to raise awareness about the North Korean refugee crisis and support refugees' resettlement through financial means. <https://maizepages.umich.edu/organization/LiNK>



**Sinaboro** Sinaboro is a Korean Traditional Drumming Group at the University of Michigan - Ann Arbor. Sinaboro seeks to share Korean culture with the Ann Arbor community and beyond through samulnori. <https://maizepages.umich.edu/organization/sinaboro>

# Upcoming Events in 2014-2015

## Chuseok Dae Party

9/20/2014

1:30pm - 4:00pm 1st Floor SSWB  
1080 S. University Ave. Ann Arbor MI 48108  
*Free and open to the public*

In Korea, around the autumn equinox every year, the whole nation takes a three-day holiday to return to their hometowns and reunite with family. The Nam Center invites you to join our family in celebrating the harvest moon this year. Filled with programming for all ages, guests can watch music and dance performances and participate in various hands-on activities.

## "Creating a World Full of Hope" World Tour by Ven. Pomnyun Sunim

### Korean language Dharma Dialogue

Sun Oct 26, 2014 3:00pm  
Rackham Amphitheatre (4th Fl)

### English language Dharma Dialogue

Sun Oct 26, 2014 7:30pm  
Rackham Assembly Hall (4th Fl)



The Venerable Pomnyun Sunim is considered one of the leading intellectuals in Korea today, preaching on how to harmonize cultivation with social engagement. His lectures based on teachings on the Buddha and his long, diverse experiences

as an activist can transcend language and cultural differences to help people all over the world. It takes the form of an exchange and a majority of the time will be spent in a Q&A style dialogue, which will provide an opportunity for participants to obtain clear answers to their religious, personal, or social concern as well as diverse life problems through in depth communication made possible by Ven. Pomnyun Sunim's extensive insight and wisdom.

## Korean Cinema Now

Showcasing the best and brightest of contemporary popular Korean cinema, the Nam Center's film series offers free films at the Michigan Theater most Saturdays in the winter term at 2 pm. Films are screened in Korean with English subtitles and open to the public. Titles subject to change.

Michigan Theater 603 East Liberty Street  
Ann Arbor, MI 48104

1/10/2015 *Miss Granny* (수상한 그녀, 2014)

1/17/2015 *A Hard Day* (끝까지 간다, 2014)

1/24/2015 *Hope* (소원, 2013)

1/31/2015 *Boomerang Family*  
(고령화 가족, 2013)

2/14/2015 *The Divine Move* (신의한수, 2014)

2/21/2015 *Kundo: Age of the Rampant*  
(군도, 2014)

3/14/2015 *My Brilliant Life*  
(두근두근 내 인생, 2014)

3/21/2015 *The Admiral: Roaring Currents*  
(명량, 2014)

4/11/2015 *Whistle Blower* (제보자, 2014)

March 25, 2015 4pm

Rackham Ampitheatre (4th floor)

## Sang-Yong Nam Memorial Lecture

This year's Sang-Yong Nam Memorial Lecture will be given by Dr. Hyun-seok Yu, President of Korea Foundation.



## A2KIFF 2014 Ann Arbor Korean Independent Film Festival

The Nam Center presents a critical selection of independent films screened in an intense three-day period in the fall term. Films are screened in the original language with English subtitles. Free admission and open to the public.

### Schedule:

10/23/2014 7:30 PM Michigan Theater

*One for All, All for One*  
(60만번의 트라이, 2013)

10/24/2014 12:00 PM 1636 SSWB

*Bandhobi* (반두비, 2009)

10/24/2014 7:30 PM Angell Hall A

*10 Minutes* (10분, 2013)

10/25/2014 2:00 PM Michigan Theater

*Non-Fiction Diary* (논픽션 다이어리, 2013)

10/25/2014 7:30 PM Michigan Theater

*My Place* (마이 플레이스, 2013)

May 8-9, 2015

University of Michigan Central Campus

## 2015 NEKST Conference

The Nam Center hosts the 3rd annual International Conference of NextGen Korean Studies Scholars, organized by graduate students at the University of Michigan with students from Seoul National University and the University of Southern California.

# Nam Center for Korean Studies Colloquium Series 2014-2015

All colloquia will be held at 4 pm in Room 1636 of the International Institute (II) unless specified otherwise.

The International Institute is located in the School of Social Work Building at 1080 South University Ave. Ann Arbor, MI 48109.

## Fall 2014

9/26/2014 2 pm, LSA 4154 ■ **Hae Yeon Choo**, Assistant Professor, Department of Sociology, University of Toronto Mississauga "*Maternal Guardians: Intimate Knowledge and Affective Boundary-Making among South Korean Volunteers for Migrant Women*"

10/8/2014 ■ **Hyunjoon Park**, Korea Foundation Associate Professor of Sociology and Education, Department of Sociology, University of Pennsylvania, and **Kuentae Kim**, Associate Professor, Department of Korean History, Seoul National University, "*The Legacy of Disadvantaged Origins: Blocked Social Mobility of Descendants of Nobis (노비) in Late Joseon (Korea)*"

11/19/2014 5 pm, Multipurpose Room UMMA ■ **Christine Hahn**, Associate Professor, Department of Art and Art History, Kalamazoo College, "*Park Su-Geun, the Bando Gallery, and Selling Korean Contemporary Art at Home and Abroad, 1950s-1970s*"

A reception to celebrate the gift of Park, Su-geun's "*People on the Street*" donated by the family of the late Professor Lee, with an opportunity to view the work on display, will follow the lecture.

12/10/2014 ■ **Ji-Yeon Yuh**, Associate Professor, Department of History, Northwestern University, "*Diasporic Koreans and the Military, 1930-1960*"

This colloquium series is made possible by the support of the Nam Family Gift, Korea Foundation, and the U.S. Department of Education Title VI grant. For more information, please call 734.764.1825 or visit us on the web at [www.umich.edu/ncks](http://www.umich.edu/ncks)

## Winter 2015

1/14/2015 ■ **Brian Myers**, Associate Professor, Department of International Studies, Dongseo University, "*North Korea's Juche Myth, and the West's Juche Fallacy*"

1/28/2015 ■ University of Michigan Graduate Students, Fellowship Forum: **Hayeon Lee** (Social Work and Anthropology) and **Joon Sung Lee** (Kinesiology), "*Transnational Marriage Migration and Vietnamese-Korean Families*," "*Impact of Sociocultural Background on Consumer Moral Reasoning Choice: Korean vs. American Consumer*"

2/25/2015 ■ **Hae Kwon Kim**, Associate Professor, Soongsil University, "*Disappearance of Prophetic Voice from The Korean Church and Its Nonservice to Korea*"

3/11/2015 ■ **Sahie Kang**, Dean, School of Resident Education, Directorate of Continuing Education, Defense Language Institute, "*Planning Assessment in a Proficiency Oriented Foreign Language Program: A Backward Design*"

4/8/2015 ■ **Taeku Lee**, Professor, Department of Political Science, UC Berkeley, "*Polling, Public Opinion, and Political Responsiveness in Korea and Beyond*"

## Music of Strings and Wind

Featuring traditional Korean instruments *Geomungo* and *Daegum*

Feb 5-8, 2015

Public events for a musical residency with recording artists **Kyoung Sun Cho** (Seoul National University of Education) and **Seungmi Suh** (Gyeongin National University of Education)

Thursday Feb 5 7 pm

**Music of Strings and Wind from Korea Concert**

Detroit Institute of Arts (5200 Woodward Ave, Detroit)  
Co-sponsored by the Friends of Asian Arts and Cultures at the DIA

Saturday Feb 7 2 pm

**Virginia Howard Lecture Series - Up Close: An Introduction to Korean Classical Music**

A hands-on petting zoo of traditional Korean instruments will precede and follow the lecture  
Ann Arbor Downtown Library | 4th Floor Meeting Room (343 S. Fifth Ave, Ann Arbor)  
Co-sponsored by U-M Stearns Collection of Musical Instruments and the Ann Arbor Public Library

Sunday Feb 8 3:30pm

**East Meets East: A Concert of Traditional East Asian Music**

with LIU Yuening (Central Conservatory of Music, Beijing) on the Yangqin (Chinese dulcimer)  
U-M Museum of Art | Helmut Stern Auditorium (525 S. State St, Ann Arbor)  
Co-Sponsored by U-M Confucius Institute and UMMA



Professor Kyoung Sun Cho



Professor Seungmi Suh

**Nam Center for Korean Studies**

International Institute  
University of Michigan  
1080 S. University, Suite 4661  
Ann Arbor, MI 48109-1106

Non-Profit Org

US Postage

**PAID**

Permit No. 144

# You Can Help!

Gifts to the Nam Center for Korean Studies help support research, teaching, the Korean Language Program and the Korean Collection in the Asia Library. The Center also helps student organizations, provides graduate fellowships, and sponsors visiting scholars, public lectures, our film series and many other special events. Your gift will also help us recruit and retain the finest students and faculty.



If you are interested in helping to support the mission of the center, please contact the Nam Center office. The University of Michigan can also work with your financial advisors to design a trust or bequest.

For information about ways to support the Nam Center for Korean Studies, please contact us at:

Please detach the form below and return with your check (payable to **University of Michigan**) to:

**Nam Center for Korean Studies**  
T: 734-764-1825 F: 734-764-2252  
Email: ncks.info@umich.edu

**Nam Center for Korean Studies**  
University of Michigan  
1080 S. University, Suite 4661  
Ann Arbor, MI 48109-1106

Your gifts are tax-deductible as allowed by law. **Thank you for your support!**

Enclosed is my gift of:  \$50  \$100  \$250  \$500  \$1,000

Other .....

Nam Center Strategic Fund (316271)

Name .....

Address .....

City/State/Zip .....

Home Phone ..... Cell Phone .....

Preferred E-mail Address .....

My check is made payable to the **University of Michigan**

I have enclosed a Matching Gift Form

Charge my gift to:  Mastercard  VISA  AMEX  Discover

.....  
Account number ..... Expiration Date .....

.....  
Signature (required) ..... Date (required) .....

I/We pledge \$ ..... and will make gift payments:

Monthly  Quarterly  Semi-Annually  Annually

Over a period of ..... years beginning (MM/DD/YY) .....

.....  
Signature (required) ..... Date (required) .....

You may also make your gift online at [www.i.umich.edu/ncks](http://www.i.umich.edu/ncks). Click on the "Give Online" button.