

# AT A GLANCE

Published November 2022



**18,656**  
UNDERGRADUATE  
STUDENTS  
ENROLLED

**3,715** first-year students

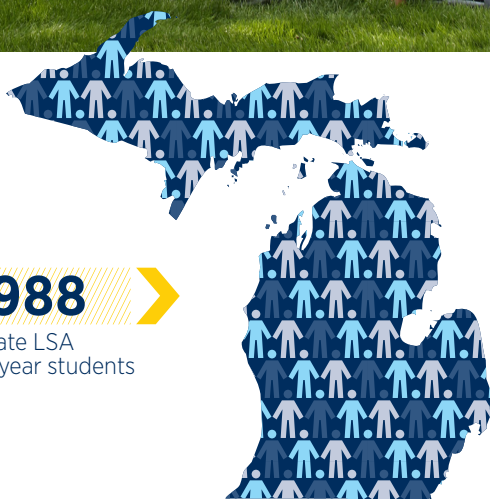
**2,728** GRADUATE  
STUDENTS

the  
*largest*  
of U-M's  
19 schools and colleges

**SINCE 1841**, the College of Literature, Science, and the Arts (LSA) has been educating young leaders through a rich liberal arts curriculum and creating new knowledge through world-class research and scholarship. The college is built upon the cornerstone of the liberal arts: the idea that a powerful, pragmatic, broad education can transform hearts and minds, solve problems in an ever-changing world, and yield ideas and innovation across every discipline.

We offer **over 85 majors and submajors** and over **100 minors in 41 academic departments**. Through the LSA Opportunity Hub, students can make the most of what they learn by pursuing internships, finding mentors, and connecting with a broad network of employers and alumni. In fact, we have one of the largest alumni networks in the world, with **231,096 living LSA graduates**.

As the largest college at U-M, with **46 programs ranked in the top ten**, LSA continues to build on an established tradition of educational excellence.



**1,988** >

in-state LSA  
first-year students



**1,727** >

out-of-state LSA  
first-year students

**1,784** >

international under-  
graduate LSA students



Source: Registrar's Office  
Enrollment Report, Fall 2022



**53,206**  
completed LSA applications

**9,527**  
LSA admissions granted

Source: Office of Undergraduate Admissions, Fall 2022

## LSA FIRST-YEAR STUDENT SCORES

GPA **3.9** median (high school recalculated)

SAT **1427** median (new scale; all sections)

ACT **32** composite median



of incoming LSA first-year students have a **3.9** recalculated GPA or higher



of incoming LSA first-year students have a **3.5** GPA or higher

Source: Office of Undergraduate Admissions, Fall 2022

The university looks beyond just grades and test scores to create an incoming class with a variety of backgrounds, intellectual passions, and talents.

## TOP 10 MAJORS

Based on the highest number of graduates for the 2022 academic year  
Source: LSA Technology Services

ECONOMICS	618	NEUROSCIENCE	226
COMPUTER SCIENCE	465	BIOLOGY, HEALTH, & SOCIETY	223
PSYCHOLOGY	359	MATHEMATICS	212
BCN (Biopsychology, Cognition, and Neuroscience)	356	INTERNATIONAL STUDIES	152
COMMUNICATION AND MEDIA	255		
POLITICAL SCIENCE	239		

**100%** of LSA tenure-track faculty teach undergraduates

degrees:

**4,249** LSA bachelor's degrees granted 2021-2022

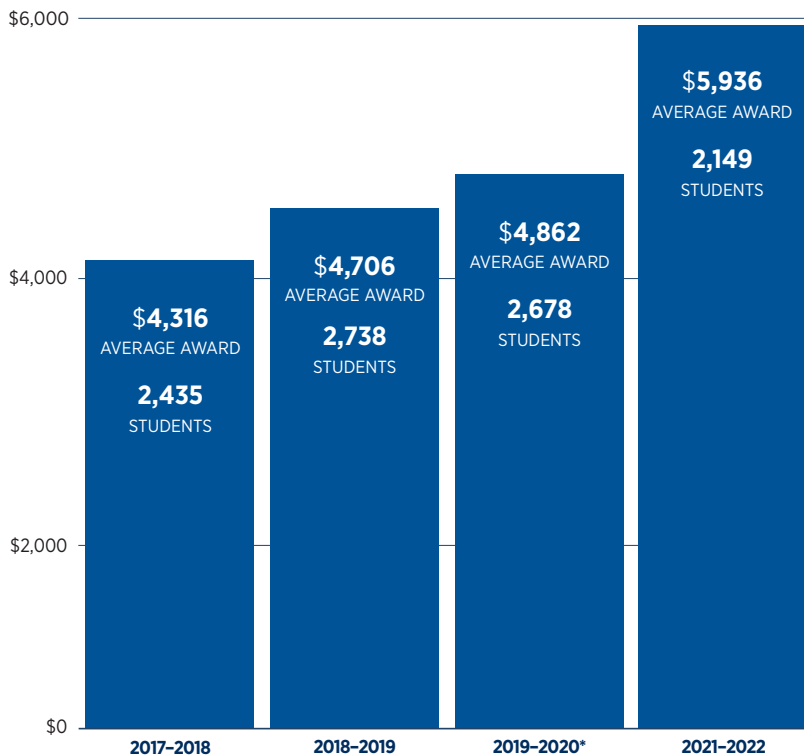


Source: CGIS, Oct 2022

# M | LSA AT A GLANCE

## SCHOLARSHIPS

ALUMNI SUPPORT FOR FINANCIAL AID  
*remains high*



Source: LSA Scholarship Office, October 2022  
\*2020-21 data excluded due to COVID-19

## FINANCES

ENDOWMENT:  
**\$1.74 BILLION**  
in support of students, faculty, and research.

Source: LSA Finance, September 2022

## FACULTY

**83** ENDOWED PROFESSORSHIPS in LSA

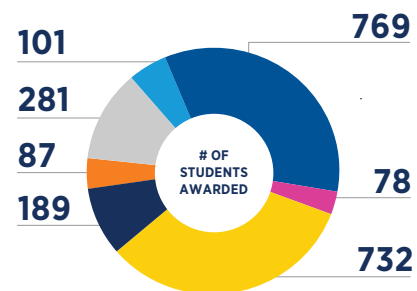
LSA FACULTY MEMBERS HAVE RECEIVED NUMEROUS AWARDS AND DISTINCTIONS.

These include fellowships from MacArthur (Genius Grant recipients), Guggenheim, Packard, and Cottrell Scholars, as well as awards from the Mellon Just Futures Grant and the Mellon New Directions Fellowship.

## FINANCIAL AID

**2149**

SCHOLARSHIPS AWARDED  
2021-22 ACADEMIC YEAR



### AMOUNT AWARDED

\$7,017,850	FOUR-YEAR RENEWABLE SCHOLARSHIPS
\$923,951	STUDY-ABROAD SCHOLARSHIPS
\$3,041,506	RETURNING STUDENT SCHOLARSHIPS
\$751,139	INTERNSHIP SCHOLARSHIPS
\$679,422	SPRING/SUMMER SCHOLARSHIPS
\$197,783	CSP SUMMER BRIDGE SCHOLARSHIPS
\$164,044	EMERGENCY SCHOLARSHIPS

## TUITION

Full-Time LSA Students  
2022-2023 Academic Year

UNDERGRADUATE	lower division		upper division	
	Resident	\$16,736	Non-Resident	\$18,836
GRADUATE	Resident	\$26,226	Non-Resident	\$52,456



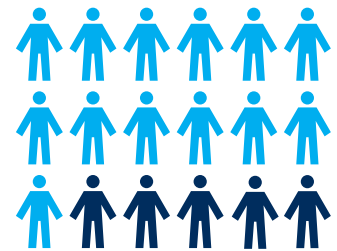
Source: Office of Undergraduate Admissions and Office of Financial Aid

## RANKINGS



In 2021-2022, **18** U-M students received  
**FULBRIGHT FELLOWSHIPS**

**13**  
in LSA



## GRADUATE PROGRAMS



African History  
Algebra/Number Theory/  
Algebraic Geometry  
American Politics  
Analytical Chemistry  
Behavioral Neuroscience  
Biostatistics  
Developmental Psychology  
Discrete Mathematics and  
Combinatorics  
Earth and Environmental Sciences  
Economic Sociology  
Historical Sociology

History  
Latin American History  
Paleontology  
Political Methodology  
Political Science  
Psychology  
Sex and Gender  
Social Psychology  
Social Stratification  
Sociology  
Sociology of Population  
Women's History

*U.S. News & World Report 2023  
rankings of graduate programs*