

Myths and Mythology in the Kelsey Museum of Archaeology

Scavenger Hunt

1. Can you find the artifacts in the Kelsey Museum galleries? Hint: They are located in our Greek gallery (1st floor) and our Roman galleries (2nd floor)
Find as many as you can! (Don't forget to look in drawers too.)
2. Can you identify the mythological figure or figures on each artifact?



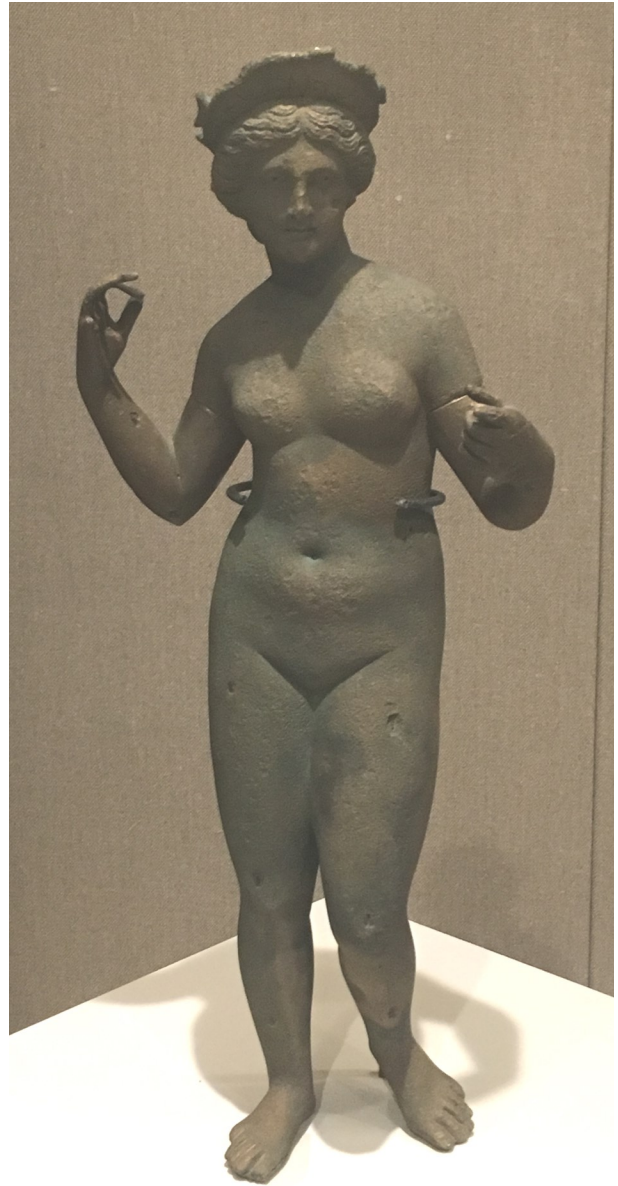
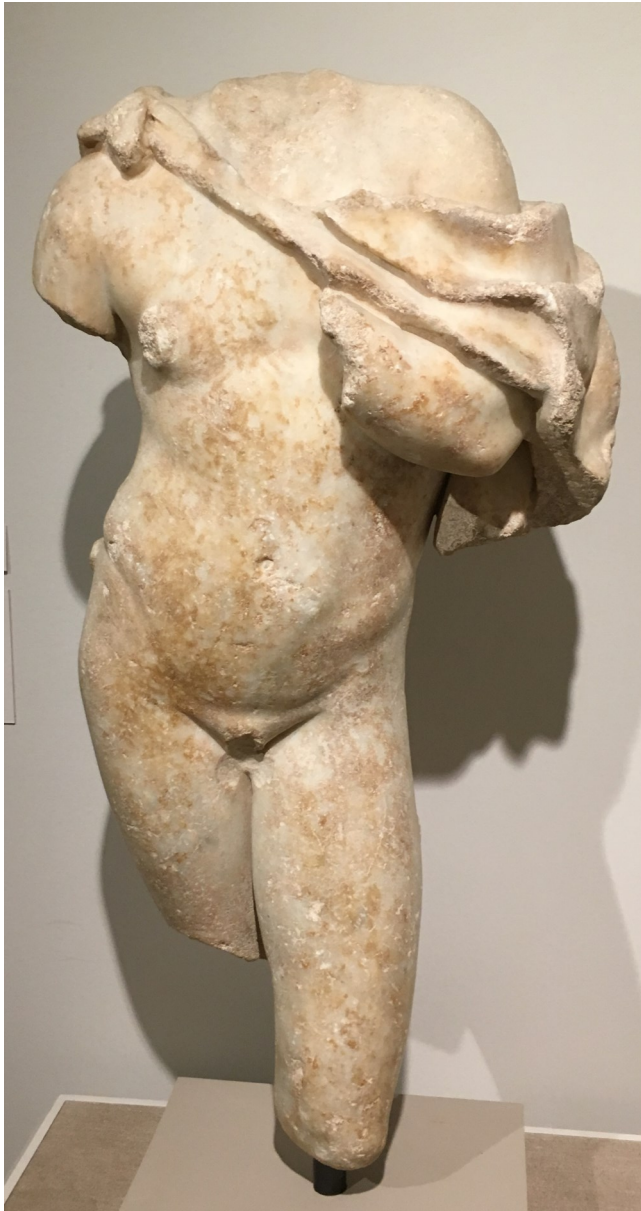
Myths and Mythology in the Kelsey Museum of Archaeology



Myths and Mythology in the Kelsey Museum of Archaeology



Myths and Mythology in the Kelsey Museum of Archaeology



Myths and Mythology in the Kelsey Museum of Archaeology



Myths and Mythology in the Kelsey Museum of Archaeology



Myths and Mythology in the Kelsey Museum of Archaeology



Myths and Mythology in the Kelsey Museum of Archaeology



Myths and Mythology in the Kelsey Museum of Archaeology



Myths and Mythology in the Kelsey Museum of Archaeology