

Current Exhibitions



Ancient Middle East

Explore one of the largest collections of Parthian pottery beyond Iraq.



Dynastic Egypt

Examine the painted mummy coffin of Djehutymose and learn about ancient Egyptian culture and religion.



Graeco-Roman Egypt

Encounter the largest corpus of daily-life objects from Graeco-Roman Egypt outside of the Cairo Museum.



Cyprus, Greece, Etruria

Learn the stories and myths of ancient Greece and Rome through decorated pottery.



Ancient Glass

View an important collection of ancient glass vessels and fragments.



Pompeii

Spend time viewing a nearly life-size representation of frescoes from Pompeii.



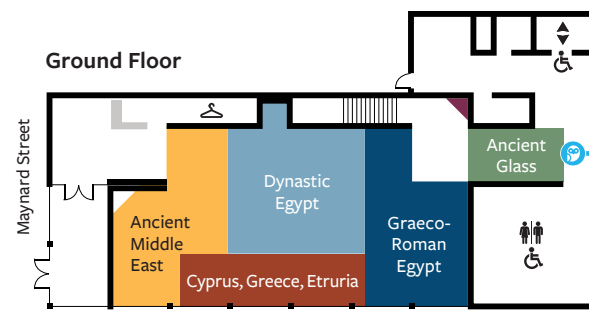
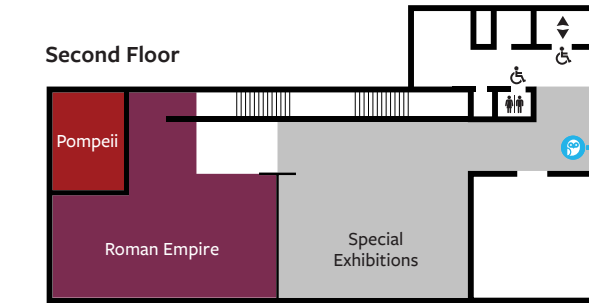
Roman Empire

Experience daily life among the diverse communities of the ancient Roman world.



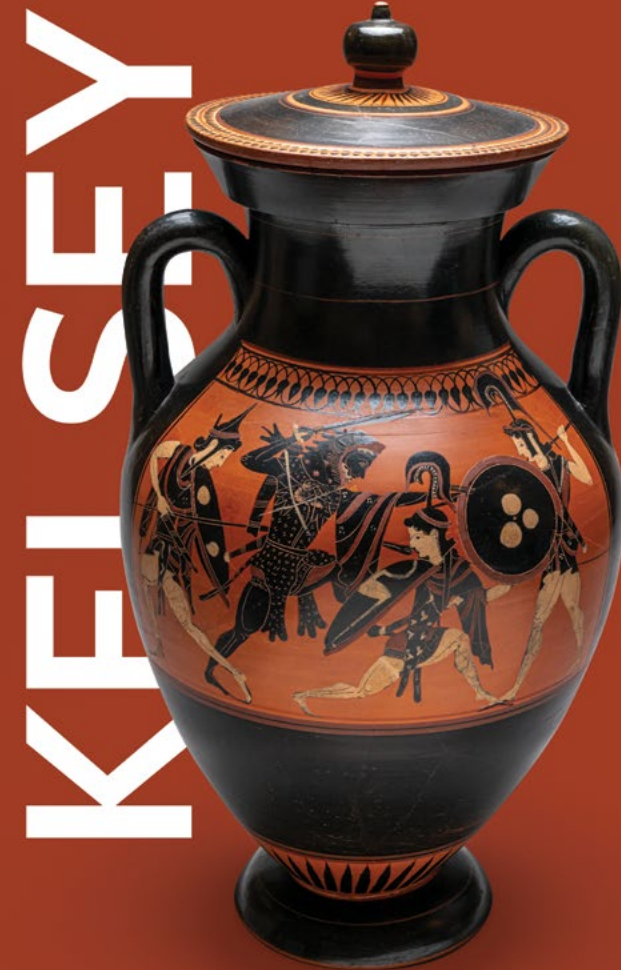
Edwin E. Meader & Mary U. Meader Special Exhibition Gallery

This gallery space hosts a rotating selection of special exhibitions featuring a variety of archaeological themes.



-  Gift Shop
-  Restroom
-  Accessible
-  Coatroom
-  Elevator

Visit our website for the latest news and programs:



These galleries hold over 10,000 years of human history. Since 1928, the Kelsey Museum has been exploring the links between past and present through its collections, research, exhibitions, and fieldwork. Join us on this incredible journey, and discover your own connection to the ancient Mediterranean world.

Welcome to the Kelsey Museum



Photo: Ballogg Photo, 2011

The Kelsey Museum of Archaeology supports teaching and research on Classical, Egyptian, and Middle Eastern archaeology through preservation of its rich collections, an active exhibitions program, and sponsorship of ongoing field research. The Kelsey houses 100,000+ artifacts, of which approximately 1,500 are on permanent display. In addition, the Kelsey mounts special exhibitions regularly.

As a museum at a public university, the Kelsey embraces a vigorous public outreach mission, engaging with local residents and visitors of all ages. It also serves as the home of the University of Michigan's graduate program in Mediterranean art and archaeology.

The Kelsey Museum of Archaeology

434 S. State Street, Ann Arbor, MI 48109
734.764.9304

Museum Hours

- ◆ Tuesday–Friday: 9AM–4PM
- ◆ Saturday–Sunday: 11AM–4PM
- ◆ Closed Mondays and university holidays
- ◆ Admission is free, but donations are welcome

For more information, visit lsa.umich.edu/kelsey

📷 📱 @kelseymuseum

Newberry Hall

Newberry Hall was designed by Spier & Rohns of Detroit in the Romanesque style made popular by Boston architect H. H. Richardson. It was dedicated in 1891 as the headquarters of the Students' Christian Association and named in honor of railroad magnate John S. Newberry, whose widow donated a large sum toward its construction. From 1921 until 1928, the university rented the building for use as classrooms; in 1928, it was given over to the newly formed Museum of Classical Archaeology. Ownership was transferred to the university in 1937, and in 1953, the museum was renamed the Francis W. Kelsey Museum of Archaeology in honor of the professor who initiated the fine collections of antiquities now housed in the building.

In 2003, a generous gift from Ed and Mary Meader of Kalamazoo funded construction of the William E. Upjohn Exhibit Wing, designed by the Chicago firm Hammond Beeby Rupert Ainge. This new addition provides over 20,000 square feet of state-of-the-art, climate-controlled study, storage, and display space. The Upjohn Wing, named after Mary Meader's grandfather William E. Upjohn, a noted pharmacist, opened to the public in November of 2009. Newberry Hall now houses classroom space and the administrative offices of the Kelsey Museum staff.

Photo: Randal Stegmeyer

Programs

The Kelsey offers a variety of events and programs, including:

Lectures

Learn more about current archaeological research at one of our lectures offered throughout the year, online and in person.

Tours

A guided tour is a great opportunity to get the inside story on our collections and exhibitions.

Virtual Tours

Take a closer look at the stories behind the museum and its collections with a virtual tour online.

Virtual Flash Talks

Dig into current archaeological research sponsored by the Kelsey Museum and ask our specialists questions.



Coming Soon

Crossroads of Culture Gallery

Spring 2026

From 400 to 1800, the Mediterranean, North Africa, and the Middle East were sites of remarkable human achievements, aided by the dynamic social, economic, and intellectual relationships that characterized the region. Throughout the Eastern Roman Empire and Byzantine world, cities such as Cairo, Constantinople, and Alexandria became important hubs for exchange, not only of commodities but also of languages, ideas, and practices—as observed with the rise and spread of Judaism, Christianity, and Islam. The Kelsey Museum's new gallery will transcend traditional boundaries, viewing diverse communities across broad geographic contexts. Drawing from the Kelsey's rich collection of artifacts and images, the gallery will provide visitors with a unique look at this "Crossroads of Culture."

Photo: Randall Stegmeyer

