

Aquatic Plants



1. *Potamogeton richardsonii*
Richardson's Pondweed: No floating leaves. Submersed leaves ovate-lanceolate with strong veins, clasping stem. Stipules disintegrating to persistent white fibers.



2. *Myriophyllum sibiricum*
Siberian Water-Milfoil: Leaves whorled, finely pinnately dissected. Middle leaves with 11 or fewer segments on each side of rachis.



3. *Elodea canadensis*
Canadian Waterweed: Simple submersed leaves in whorls of 3. Leaves 1-5 mm wide, blunt at apex.



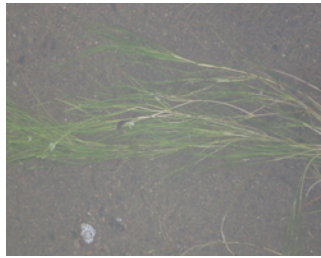
4. *Utricularia vulgaris*
Common Bladderwort: Carnivorous. 2-5 yellow flowers per stem. Free-floating plants. Leaf-like branches round in cross section, divided 6 or more times, bear bladder-like traps that capture small organisms.



5. *Ceratophyllum demersum*
Coontail: Free-floating plants. Leaves whorled. Principle leaves forked no more than twice.



6. *Potamogeton gramineus*
Grass-leaved Pondweed: Submersed leaves entire, sessile, usually 5-9-veined. Stems round in cross-section, commonly branched.



7. *Stuckenia pectinata*
Fennel-leaf Pondweed: Appears fan-like. Much-branched stems with numerous opaque, fine leaves with acute tips.



8. *Najas flexilis*
Slender water-nymph: Leaves appearing opposite or whorled, tapering to tip with 20-60 minute spines.



9. *Potamogeton zosteriformis*
Eel-grass Pondweed: No floating leaves. Submersed leaves linear, 15-35-veined, usu. less than 2 mm wide. Stem round in cross section.



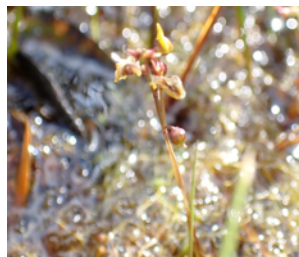
10. *Potamogeton amplifolius*
Broad-leaved Pondweed: Submersed leaves entire, 27-37-veined, distinctly arched. Stems round in cross-section.



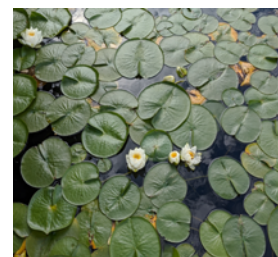
11. *Vallisneria spiralis*
American Eelgrass: Long, basal, ribbon-like leaves. Flowers reach surface by the growth of a long, cylindrical peduncle.



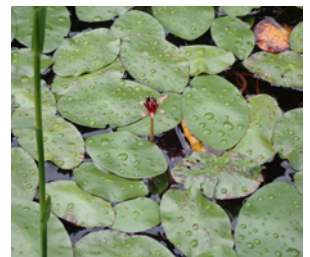
12. *Potamogeton natans*
Floating-leaved Pondweed: Floating leaves 0.5-5 inches long, 1-2 inches wide, usu. cordate at base. Petiole pale at junction with blade. Submersed leaves 1-2 mm wide.



13. *Utricularia minor*
Lesser Bladderwort: Carnivorous. Yellow flowers, spur of corolla <3 mm. Free-floating plants. Leaf-like branches, flat in cross section, bear bladder-like traps that capture small organisms.



14. *Nymphaea odorata*, *akandamoo
American White Waterlily: Showy, fragrant white to pinkish flowers with deeply cleft, circular floating leaves. Pink invasives have been observed in the Maple River's East Branch.



15. *Brasenia schreberi*
Watershield: Purple-red flowers. Floating leaves elliptic. Submersed parts typically coated in gelatinous slime. Occurs in quiet waters.



16. *Nuphar variegata*
Yellow Pond-Lily: Showy, yellow flowers. Floating leaves deeply cleft with petioles flattened above or slightly winged.