

Developments

A Newsletter of the Developmental Psychology Area

Spring
2013

Message from the Chair

BY VONNIE C. MCLOYD

The university continues to be a highly attractive and invigorating place for faculty and students in developmental psychology. Its resources, strong commitment to academic excellence, and renowned diversity make it so. As is well known, the state of Michigan has experienced major economic problems for several years. One effect of this is that state appropriations to the university have decreased by 26% since 2002. However, the university has managed to avoid severe program cuts and double-digit tuition increases through a range of strategies including revenue diversification and prudent long-term investment and cost-containment strategies. This year, the university once again ranked first in research and development spending among the nation's public universities according to National Science Foundation rankings.

The Developmental area is at full strength and as vibrant as ever. We continue to reap benefits from the health of the university, the area's training grant, our thriving undergraduate curriculum, and an interdisciplinary focus that attracts graduate students from a broad spectrum of allied disciplines. Last fall, in addition to five new graduate students, we welcomed the newest addition to our faculty, Dr. Luke Hyde. Luke studies the interplay of experience and biology in the development of psychopathology in early childhood through early adulthood. He is also a member of the Clinical area faculty and will play a major role in strengthening our curriculum in developmental psychopathology.

Our Recruitment Weekend in February was exciting and highly successful. We have a class of 10 joining us in Fall 2013, the largest in nearly two decades! With their stellar academic credentials and diverse research experiences, interests, and backgrounds, they are sure to shape our program in new and interesting ways. The cohort consists of Sammy Ahmed (New York University),



Emma Beyers Carlson (Bethel University), Kimberly Brink (MIT), Fernanda Cross (University of Michigan), Margaret Echelbarger (Wellesley College), Arianna Gard (UCLA), Amira Halawah (Seattle Pacific University), Tyler Hein (University of Pittsburgh), Jasmine Manalel (University of Virginia), and Neelima Wagley (Michigan State University).

Five students completed the program this year and all secured highly coveted postdoctoral fellowships: Lindsay Bell, US Department of Education; Lindsay Bowman, University of Maryland; Jie Chen, University of Michigan; Julie Maslowsky, University of Wisconsin—Madison; Jillian Wiggins, NIMH. Others are nearing completion and have already landed positions: Johnna Swartz, Carolina Consortium on Human Development postdoctoral fellowship; Kristina Lopez, tenure track faculty position, California State University—Long Beach. A large number of our continuing students have successfully garnered research and fellowship support from prestigious university and external (e.g., NSF) sources. Congratulations to all of you! Your accomplishments speak well of your talents, motivation, and training.

I was delighted to see so many of you at the SRCD meeting in Seattle. The Michigan Party was relaxing and enjoyable, with attendees sharing the latest developments in their lives, future plans, and fond memories of their formative years at Michigan. Few occasions are more vivid reminders of what bonds us as developmental psychologists—continuity, change, and generativity.

Best wishes for a terrific summer.

Inside This Issue

- Get to know our new students, postdocs, and faculty
- Professional and personal milestones
- Conference Spotlight on GSA
- Learn about the LIFE program

Newsletter Committee

Editor:

Preeti Samudra

Faculty Advisors:

Margaret Evans
Ioulia Kovelman

Committee Reporters:

Wylie Wan
Soraya Giaccardi

Article Contributors:

Vonnice C. McLoyd
Elise Hernandez
Toni Antonucci
Patricia Reuter-Lorenz
Clemens Teach-Roemer

Photo Contributors:

Psych SAA
Meghan Martz
Patty Kuo
Adrian Gale
Pam Davis-Kean
John Schulenberg
Tissyana Camacho
Amber Williams
Lauren Reed

Welcome New Students!

COLLECTED BY SORAYA GIACCARDI



Hannah Giasson

Prior Institution: Bates College

What were you doing before coming to Michigan? Working in the National Center for Posttraumatic Stress Disorder at the Department of Veterans Affairs in Boston.

Current Advisors: Jacqui Smith and Toni Antonucci

Research Interests: Self-perceptions of aging, and associations between age-related stereotypes and well-being among older adults.

Favorite thing about Michigan so far? The seasons!

If you weren't in developmental psychology, what would you be doing instead? I would probably be studying public health or sociology.

What are some of your hobbies or recreational interests? Running, skiing, hiking, writing, reading

If you could go anywhere in the world, where would you go? Portland, Maine or Portland, Oregon



Soraya Giaccardi

Prior Institution: The University of Texas at Austin (Hook 'Em!)

What were you doing before coming to Michigan? Working in the Laboratory for the Study of Anxiety Disorders and the Gender and Racial Attitudes Lab at the University of Texas.

Current Advisors: L. Monique Ward

Research Interests: The way that media contributes to adolescents' understanding of gender and sexuality. I am also interested in general outcomes of subscribing to rigid ideologies, particularly within men and masculinity.

Favorite thing about Michigan so far? In general, I've enjoyed the "feel" of Ann Arbor, and everyone is super friendly. I also enjoyed experiencing a real winter for the first time, although I wouldn't mind if it ended now...

If you weren't in developmental psychology, what would you be doing instead? If I weren't in developmental psychology, I would

love to be a political activist for an organization like The Workers Defense Project or the Feminist Majority PAC.

What are some of your hobbies or recreational interests? Kayaking, taking day/weekend trips, zoo and aquarium trips with Jaron

If you could go anywhere in the world, where would you go? Italy 😊



Rosanne Jocson

Prior Institution: Undergraduate: University of the Philippines; Masters: Ateneo de Manila University

What were you doing before coming to Michigan? I worked in Ateneo de Manila University as part-time lecturer and as lab manager of the Philippine site of the Parent Behavior and Child Adjustment Across Cultures (PAC) Research Lab.

Current Advisors: Vonnie McLoyd and Rosie Ceballo

Research Interests: Socioeconomic

disadvantage and its influence on family processes and child development

Favorite thing about Michigan so far? The diversity of people, the friendly atmosphere, and the many benefits of being a University of Michigan student. I also loved experiencing fall and winter for the first time in Ann Arbor.

If you weren't in developmental psychology, what would you be doing instead? I would most probably be a medical doctor.

What are some of your hobbies or recreational interests? Watching TV and movies, going to concerts, traveling, shopping

If you could go anywhere in the world, where would you go? Back to the tropics!



Above: Wylie Wan and Jacqui Smith



Left: Ju Hyun Song, Daniel Choe, Jon Lane, Lauren Reed, and Selin Glugoz



Steven O. Roberts

Prior Institution: New York University

What were you doing before coming to Michigan? Completing my undergraduate degree

Current Advisors: Susan Gelman and Stephanie Rowley

Research Interests: Social/Racial Categories

Favorite thing about Michigan so far? The people

If you weren't in developmental psychology, what would you be doing instead? Wondering what I would be doing if I were in developmental psychology

What are some of your hobbies or recreational interests? Soccer, reading Plato, seeing musicals/shows

If you could go anywhere in the world, where would you go? Home



Paige Safyer

Prior Institution: Bryn Mawr College

What were you doing before coming to Michigan? Research assistant at The University of British Columbia, Research assistant at Beth Israel Medical Center

Current Advisors: Dr. Brenda Volling (Psych), Dr. Richard Tolman (SSW)

Research Interests: I am interested in the study of relationship quality across the lifespan, with a particular focus on the development of important attachment relationships. I am also interested in the theoretical and empirical bases for interventions that promote the strengthening of attachment quality in parent-child dyads as well as in therapeutic relationships.

Favorite thing about Michigan so far? All of the delightful people I have met this year!

If you weren't in developmental psychology, what would you be doing instead? Attempting to become a documentary filmmaker.

What are some of your hobbies or recreational interests? Teaching myself how to cook, playing with my dog, watching Netflix

If you could go anywhere in the world, where would you go? Anywhere warm.

Welcome Postdocs!

COLLECTED BY SORAYA GIACCARDI



Craig Smith, Ph.D.

Prior Institution: Harvard University

What were you doing before starting your post-doc position at Michigan?

I was doing a 2-year teaching-focused post-doc in the psychology department at Harvard.

What are your research interests, and what current projects are you working on?

I am broadly interested in social-cognitive development. Examples of things I am currently studying are: how children allocate stuff (resources, rewards, penalties, etc.), what children understand about goodness and wickedness, and the role of others' input in children's thinking about future emotion. I have started up a lab site at the Ann Arbor Hands-On Museum where kids and parents take part in this research while they visit the museum.

What are some of your hobbies or recreational interests?

I spend lots of my free time playing with my 8- and 10-year-old sons. We build things, break things, run fast, say things that elicit bouts of giggling, and draw pictures of alien

life forms gathering at alien conventions. I also like biking and being outside.

Favorite thing about Michigan so far?

I love how friendly people are here.

If you weren't in developmental psychology, what would you be doing?

Writing fiction. I am currently finishing a children's novel, and would be thrilled to have that be successful some day.

If you could go anywhere in the world, where would you go?

From the time when my children were babies, we have spent 1-2 weeks in Wellfleet, MA (on Cape Cod) each summer. It's become one of my favorite places. I would love to be magically transported to a warm summer day on a beach there, with lots of time for playing in the waves and sand with my kids.

What else would you like to tell us about yourself?

I enjoy collaborating on research projects. If you see overlap between our interests and want to join forces, please come chat with me!



Sandra Tang, Ph.D.

Prior Institution: Boston College

What were you doing before starting your post-doc position at Michigan?

I was earning my doctorate.

What are your research interests, and what current projects are you working on?

My research interests focus on the role of family, school, and culture in shaping children's academic and social-emotional development, particularly for low-income, immigrant, and minority children. I am working on a few different projects at the moment, one of which includes getting my dissertation ready for publication.

What are some of your hobbies or recreational interests?

I like spending time outdoors, hanging out with friends and dogs, and going on eating tours.

Favorite thing about Michigan so far?

I love that the sun sets so much later in the day in comparison to the East Coast.

If you weren't in developmental psychology, what would you be doing?

I'm not really sure, but if I lived in an alternate reality I would want to be the Iron Chef Chairman.

If you could go anywhere in the world, where would you go?

It's been a long winter. I'd like to go anywhere that is warm and sunny.



Grace Yang, Ph.D.

Prior Institution: University of Michigan (PhD), USC (BA, MA)

What were you doing before starting your post-doc position at Michigan?

Working on my Ph.D in Communication here at UM.

What are your research interests, and what current projects are you working on?

Children's development of prosocial and antisocial behavior and how various family and environmental factors, including parenting, SES, extracurricular activity participation, and mass media, influence these developmental processes.

What are some of your hobbies or recreational interests?

Organic cooking, walking, music (playing the cello, listening to indie music), fashion (browsing fashion

blogs, window shopping)

Favorite thing about Michigan so far?

I love spending Saturday mornings in Kerry Town, starting with fresh coffee at Café Verde and a trip to the Farmer's market. I also love going to Mackinac Island in the summer time. The favorite part of my trip is walking while enjoying the fragrant lilacs and calm, relaxing atmosphere.

If you weren't in developmental psychology, what would you be doing?

Having a career in broadcasting journalism.

If you could go anywhere in the world, where would you go?

Somewhere warm and sunny in March like Maldives or Caribbean.



Above: Meghan Martz, John Schulerberg, and Megan Patrick at a special SRCD topic meeting

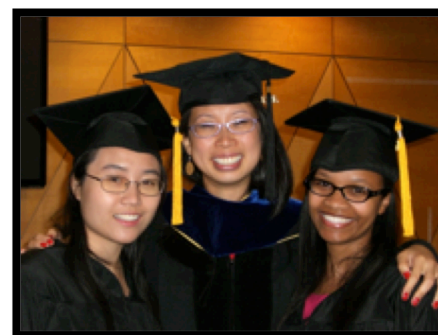


Left: Meghan Martz, Jordan Martz, Tissyana Camacho, Irene Wu, Selin Gulgoz, and Francisco Velasquez at the Halloween Party



Right: Adrian Gale, Amber Williams, and Matt Kim

Right: Wylie Wan, Jillian Wiggins, and Amber Williams



Meet New Faculty

Dr. Luke W. Hyde

COLLECTED BY SORAYA GIACCARDI

What were you doing before starting your faculty position at Michigan?

I was living in Pittsburgh and finishing my PhD in Developmental and Clinical Psychology with a Concentration in Cognitive Neuroscience at the University of Pittsburgh working with Danny Shaw and Ahmad Hariri. I was also on my clinical internship at Western Psychiatric Institute and Clinics, so it was a busy year!

What are your current research interests?

I'm interested in understanding psychopathology and personality from a Developmental Psychopathology standpoint, emphasizing the interaction of risk factors from toddlerhood to adolescence and early adulthood. I'm most interested in youth antisocial behavior and understanding the interaction of environmental (e.g., harsh parenting, dangerous neighborhoods) and biological (e.g., genetic, neural) risks as they interact across development to affect risk and resilience. I use techniques such as fMRI, molecular genetics, self-report and observational

measures within longitudinal studies of high risk youth and families to understand development.

Where do you see your research program headed?

I'd like to be involved in multiple collaborations that allow us to use molecular genetics, fMRI, and observational measures of behavior in larger and more diverse studies than in the past, so that we can assay biology and experience across childhood and adolescence. So with a continued focus on youth antisocial behavior I want to understand how trajectories of behavior are affected by trajectories of brain function and experience.

How did you get interested in your research area?

I've been working with kids since I was a teenager working at a summer camp and so I've been interested in child development, particularly risk and resilience since then. I had a transformative experience in college when I did an internship at a residential treatment facility for adjudicated



youth from New York and saw how difficult it can be for youth with the deck stacked against them. From this experience, I wanted to better understand risk and resilience to inform early starting prevention programs that will be more effective at preventing large portions of our population from ending up in prison.

What else would you like to tell us about yourself?

I'm excited to be here! I am passionate about my work but also love getting out of East Hall to do things like play soccer, go for a run or cook a good meal.

Professional & Personal Milestones

COLLECTED BY WYLIE WAN

FACULTY AWARDS & HONORS

- **Pamela Davis-Kean** was selected as a Fellow of the Association for Psychological Science (APS).
- **Jacquelynne Eccles** was elected as the President of the American Psychological Association (APA) Division 7 (Developmental Psychology). She will also receive the American Psychological Federation's Gold Metal for Psychology in the Public Interest at APA.
- **Susan Gelman** was elected to the National Academy of Sciences in 2012, and will be inducted this year (2013). She was invited to faculty membership in U-M's chapter of Phi Kappa Phi (an all-discipline honor society), and will also be inducted this year (2013). She was recommended to the Board of Regents by the Dean of LSA for a Collegiate Professorship. Susan was named the Heinz Werner Collegiate Chair of LSA and received a Distinguished Faculty Achievement Award from the Rackham Graduate School. She was also elected to the APA Council of Representatives for the APA Division 7 (Developmental Psychology). Most recently she was appointed as interim Dean of LSA
- **John Hagen** is on the founding Board of Directors of the newly established Society for the Study of Emerging Adulthood. The Society has a journal and its first issue appeared recently. The Sixth Biennial Conference on Emerging Adulthood will be held October 9-11, 2013 in Chicago.
- **Jacqui Smith** received the Mentorship Award for Division 20 of APA (Adulthood and Aging). This award is given to individuals who consistently provided support, guidance, and strong direction to undergraduate and graduate students in aging and adult development.
- **Monique Ward** was a recipient of the Arthur F. Thurnau Professorship for her outstanding teaching. This is the most prestigious honor that the University bestows for teaching.
- **Henry Wellman** gave an invited address at APA in August, 2012 ("Theory of Mind: Better Methods, Clearer Findings, More Development") where he received the 2012 G. Stanley Hall Award for career contributions to Developmental Psychology.

CURRENT STUDENT AWARDS & ACHIEVEMENTS

- **Adriana Aldana** received a Rackham Centennial Spring Summer Research Fellowship. She was also inducted to the Edward Alexander Bouchet Graduate Honor Society (Bouchet Society), which recognizes outstanding scholarly achievement and promotes diversity and excellence in doctoral education.
- **Maria Arredondo** received the Rackham Graduate Student Research Grant in Fall, 2012.
- **Lindsay Bowman** was a recipient of a Rackham Outstanding Graduate Student Instructor award in January, 2013.
- **Tissyana Camacho** was a 2012 Dalmas Taylor Policy Fellow (Society for the Psychology Study of Social Issues) and a Psychology Summer Institute Fellow (American Psychological Association).
- **Adrian Gale** received the Rackham International Student Fellowship and was nominated for a Rackham Outstanding Graduate Student Instructor award.
- **Selin Gulgoz** received the SRCD Student Travel Award, was nominated by the department for the Mary Malcomson Raphael Award, and was awarded the Rackham Leonard Small Award for conducting research in Turkey. Additionally, she organized a symposium for SRCD, which included her paper.
- **Patty Kuo** received the Foundation for Scientific Study of Sexuality Ira and Harriet Reiss Theory Paper award (citation: van Anders, S.M., Goldey, K.L., & Kuo, P.X. (2011). The Steroid/Peptide Theory of Social Bonds: Integrating testosterone and peptide responses for classifying social behavioral contexts. *Psychoneuroendocrinology*, 36, 1265-1275.) She was also nominated for a Rackham Outstanding Graduate Student Instructor award in 2012.
- **Meghan Martz** attended the SRCD Special Topic Meeting: "Transitions from Adolescence to Adulthood" with Drs. **John Schulenberg** and Megan Patrick. She was also elected as an Emerging Scholar Representative for the Society for Research on Adolescence (SRA).

- **Julie Maslowsky** received the Psychology Department's Marquis Award for Best Dissertation and gave the commencement address at the Psychology graduation ceremony this year.
- **Lauren Reed** received 2013 Community of Scholars Summer Fellowship from the Institute for Research on Women & Gender and the Harold T. and Vivian B. Shapiro Prize from the Joint Doctoral Program in Social Work and Social Sciences.
- **Steven Roberts** received the National Science Foundation Graduate Fellowship, the Ford Foundation Predoctoral Fellowship, and the Rackham Graduate Student Research Grant.
- **Sarah Trinh** received the IRWG/Rackham Research Grant for Scholarship and Creative Activities Focusing on Women &/or Gender and the Hagen-Stevenson Dissertation Award.
- **Francisco Velasquez** received a National Science Foundation Graduate Fellowship.
- **Wylie Wan** received the Barbara A. Oleshansky Memorial Award, the Behavioral and Social Sciences Travel Award from the Gerontological Society of America (GSA), and the Graduate Student Travel Award from the Society for Personality and Social Psychology (SPSP).
- **Abigail Williams** received the Rackham International Travel Grant.
- **Jillian Lee Wiggins** received the Health Emotions Travel Award.

JOBS, PROMOTIONS, AWARDS & TENURE

- **Lindsay Bell Weixler** is currently a Presidential Management Fellow, working as an Education Research Analyst in the U.S.

Department of Education (Office of Planning, Evaluation, and Policy Development)

- **Lindsay Bowman** accepted a post-doctoral position at the University of Maryland to work with Nathan Fox.
- **Jerel Calzo** received a K01 Career Development Award from the National Institute on Drug Abuse: "Substance Use and Disordered Weight Behaviors in Sexual Minority Youth Contexts." He is currently a research scientist in Adolescent/Young Adult Medicine at Boston Children's Hospital and an Instructor in Pediatrics at Harvard Medical School.
- **Lisa Hayes (nee Slominski)** recently completed a 3-year post-doc at Emory and accepted a tenure-track position at Oglethorpe University.
- **Kristina Lopez** accepted a tenure-track position at California State University Long Beach as an Assistant Professor in the School of Social Work, starting Fall 2013.
- **Julie Maslowsky** was awarded a postdoctoral fellowship in the Robert Wood Johnson Foundation Health and Society Scholars Program at the University of Wisconsin,
- **Johnna Swartz** was awarded a Carolina Consortium on Human Development Postdoctoral Fellowship to work with Ahmad Hariri at Duke University.
- **Jennifer Walsh** received a 5-year K01 award "Integrative Data Analysis of HIV Prevention Trials," from NIMH. She is currently an Assistant Professor (research) at the Centers for Behavioral and Preventive Medicine at The Miriam Hospital and the Department of Psychiatry and Human Behavior at Brown University

- **Jillian Lee Wiggins** accepted a post-doctoral position at National Institute of Mental Health where she will be working with Ellen Leibenluft and using MRI and genetic tools to investigate developmental psychopathology.
- **Samantha Worzalla** was awarded an NIH postdoctoral National Research Service Award to work with Eva Pomerantz at the University of Illinois Urbana-Champaign

COMPLETED DISSERTATIONS

- **Lindsay Bell Weixler** (December 2012): "The Contributions of Pre-school Attendance and Kindergarten Experience to Executive Functioning in Chinese and American Children." (Dissertation Chair: Fred Morrison)
- **Lindsay Bowman** (December, 2012): "Continuity and Change in Theory of Mind Development: A Neuroscientific Approach." (Dissertation Chair: Henry Wellman)
- **Jie (Jacey) Chen** (Fall 2012): "Breaking Through the Traditional Second Language Learning Model-- Exploring Different Exposure Approaches for Learners of Different Ages" (Dissertation Chair: Twila Tardif)
- **Julie Maslowsky** (June, 2012): "Substance use consequences of adolescent mental health problems: Integrating national and high-risk samples." (Dissertation Chair: John Schulenberg)
- **Samantha Worzalla** (June 2012): "Using Voice-Recording Technology to Investigate the Contributions of Mothers' Management Language to Children's Executive Functions" (Dissertation Chair: Fred Morrison)

- **Jillian Lee Wiggins** (March 2013): "Brain and genetic mechanisms of socio-emotional functioning in autism spectrum disorders" (Dissertation Chair: Chris Monk)

COMPLETED 619s

- **Matthew Kim**: "Motivational characteristics of young children are associated with error-related brain activity," with Drs. Fred Morrison and Bill Gehring (October, 2012).
- **Wylie Wan**: "Work Characteristics on Divorce Over 16 Years: Examining Gender, Race, and Timing," with Drs. Toni Antonucci, Kira Birditt, and Jacqui Smith (August, 2012).
- **Abigail Williams**: "Mapping Resilience Trajectories for African American Youth in the Juvenile Justice System," with Drs. Pamela Davis-Kean and Joseph Ryan (August, 2012).
- **Amber Williams**: "The Role of Gender in the Relations among Racial Socialization, Racial Identity, and Academic Outcomes," with Drs. Stephanie Rowley and Robert Sellers (September, 2012)

SIGNIFICANT PUBLICATIONS

- **Halle, T., Metz, A., Martinez-Beck, I.** (2013). *Applying Implementation Science in Early Childhood Programs and Systems*. Brookes Publishing. [Tamara Halle (1994) is Co-director of Early Childhood Research at Child Trends; Ivelisse Martinez-Beck (2000) is Senior Research Analyst in the US Dept. of Health and Human Services.]
- **Kuo, P.X., Carp, J.M., Light, K.C., & Grewen, K.M.** (2012). Behavioral interactions and testosterone linked with neural responses to infants in human fa-

thers. *Biological Psychology*, 91(2) 302-306.

- Patrick, M. E., **Schulenberg, J. E., Martz, M. E.**, Maggs, J. L., O'Malley, P. M., & Johnston, L. (in press). Extreme binge drinking among American 12th-grade students: Prevalence and predictors. *JAMA Pediatrics*.
- Ryan, J. P., **Williams, A. B.**, & Courtney, M. E. (in press). Adolescent neglect, juvenile delinquency, and the risk of recidivism. *Journal of Youth and Adolescence*.
- Rosengren, K R., Brem, S., **Evans, E. M.**, & Sinatra, G., Eds. (2012). *Evolution Challenges: Integrating Research and Practice in Teaching and Learning about Evolution*. Oxford University Press.
- **Ward, L. M., Reed, L., Trinh, S., & Foust, M.** (in press). Sexuality and entertainment media in the new millennium. In D. Tolman and L. M. Diamond (Eds.), *Handbook of Sexuality and Psychology*. American Psychological Association.
- Patton, D.U., Hong, J. S., **Williams, A. B.** & Allen-Meares, P. (in press). A review of research on school bullying among African American youth: An ecological systems analysis. *Educational Psychology Review*.

RETIREMENT

- **Jacquelynne Eccles** has accepted a position at the University of California, Irvine and will be going on retirement furlough September 1, 2013.

PERSONAL

- **Lindsay Bell (Weixler)** was married in May 2012.

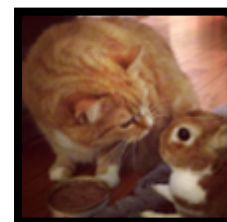
- **Margaret Evans** and Gus Buchtel welcomed their newest granddaughter, Isobel Yisi Buchtel Guan on 10/28/2012.



- **Monica Foust** married Laura Stewart on Friday, March 1, 2013 in the great state of NY (one of the few that recognizes same-sex marriages). It was an intimate ceremony with their children, a very dear friend Tania, and Monica's sister. A larger celebration will be held in the summer.



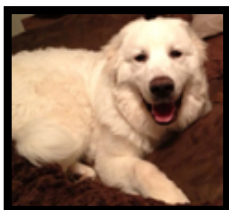
- **Helga** the cat and Templeton the rabbit, pets of unnamed PhD students, had a fateful meeting.



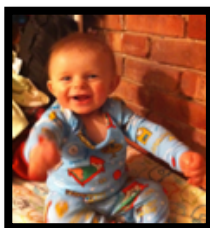
- **Patty Kuo** married Robert Russell in October 2012.



- **Kristina Lopez** and Carlos Ortiz welcomed their daughter Araceli Ortiz on June 7, 2012.
- **Meghan Martz** and her husband got a Great Pyrenees named Tully in October, 2012.



- **Fred Morrison** and **Cathy Lord** welcomed their grandson Calder Hearne Morrison on July 26th, 2012 to their family. They are awestruck grandparents.

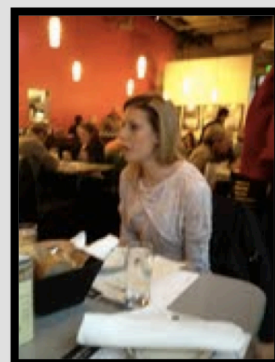


SRCD Snapshots!

Society for Research in Child Development
2013 Biennial Meeting in Seattle



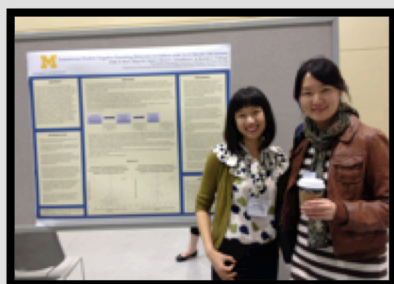
Above: Adrian Gale by his poster



Above: Meghan Martz in Seattle for SRCD



Left: Selin Gulgoz, Meghan Martz, Laura Miller, and Daniel Choe in Seattle

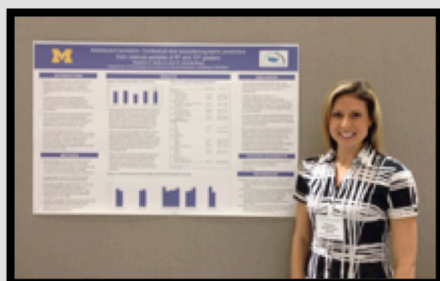


Left: Patty Kuo and Ju Hyun Song by Patty's poster

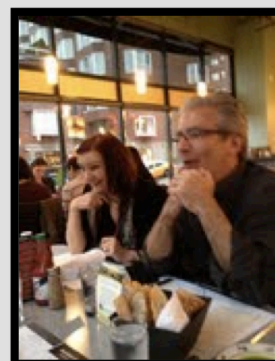


Left: Pamela Davis-Kean and Julie Maslowsky

Right: Meghan Martz by her poster



Right: John Schulenberg in Seattle



Conference Spotlight:

The Gerontological Society of America

65th Annual Scientific Meeting in San Diego, CA on November 14-18, 2012

BY ELISE HERNANDEZ & WYLIE WAN

Aging begins at birth, and GSA is all about aging!

The Gerontological Society of America (GSA) is an interdisciplinary professional association founded in 1944, centering on issues of life course and aging.

GSA holds a conference every year that gathers over 4,000 researchers, educators, and practitioners to showcase their innovative projects. Members are affiliated with one or more of its sections, which include Biological Sciences, Behavioral and Social Sciences, Health Sciences, and Social Research, Policy, and Practice.

This past year's 65th annual conference's slogan was "Charting New Frontiers in Aging".

There was a wide variety of topics covered ranging from family and intergenerational relationships to cognition to cross-cultural studies. Many topics are threaded by a theme on how early life experiences such as SES and health influence later life.

At the conference...

Dr. Jacqui Smith, also a current GSA Fellow, hasn't missed a meeting in the past 25 years! She and her lab members were involved in numerous talks and presentations covering experienced well-being, stress, mixed emotions, health, and successful aging.



*Group photo with Dr. Toni Antonucci after receiving her award
Photo credits to Katherine L. Fiori (Former UM PhD student and current Adlephi University faculty)*

Dr. Toni Antonucci received the 2012 Distinguished Career Contribution to Gerontology Award presented at the Behavioral and Social Sciences Section Meeting. Dr. Antonucci was the past president of GSA in 2002 and is a current GSA Fellow, which is the Society's highest class of membership. She's been attending GSA meetings since 1971. Apart from receiving the award, Dr. Antonucci presented talks on a range of topics from global collaborations to volunteering to social support and well-being.

A group of graduate students attended the meeting as well. It was **Sojung Park** and **Wylie Wan**'s first and **Elise Hernandez**'s second GSA experience. Sojung and Wylie both presented their research as part of symposiums. Sojung presented her Psych 619 study, which identified social network types among Korean older adults and their differential associations with well-being. Wylie presented a study on the effects of work-family conflict in early marriage on marital happiness over 16 years.

We felt that this was one of the best conferences we have attended! It was extremely organized so all the posters and talks were very well attended (wine and hor d'oeuvres were served at the welcoming poster session!). It was a particularly valuable networking opportunity and we still exchange emails about methodology and share our research with people we have met.

Looking forward to the 66th Annual Meeting in New Orleans, LA on November 20-24, 2013!

LIFE:

An Interdisciplinary International Program on Human Development

BY WYLIE WAN*, CLEMENS TEACH-ROEMER**, TONI ANOTONUCCI*** &
PATRICIA REUTER-LORENZ***

* LIFE Fellow ** Co-Director of Berlin LIFE *** Co-Director of U-M LIFE

What is LIFE?

LIFE is an interdisciplinary international program that offers unique training to doctoral students in the dynamics of human development. Its full title is "The Life Course: Evolutionary and Ontogenetic Dynamics (LIFE)." We're interested in everything from short-term changes and individual processes to long-term changes and lifespan development, covering topics from cognition to education to methodology and more.

The program combines efforts from the Max Planck Institute for Human Development, the Freie Universität Berlin, the Humboldt-Universität of Berlin, the University of Virginia, the University of Zurich, and the University of Michigan. LIFE members are doctoral students (fellows) and faculty staff from the participating institutions.

The LIFE community consists of more than 90 faculty members and over 50 fellows at the four above sites.

Participating U-M Developmental Psychology faculty members:

Toni Antonucci, Kai Cortina, Pamela Davis-Kean, Jacquelynne Eccles, Daniel Keating, Kevin Miller, Arnold Sameroff, John Schulenberg, Jacqui Smith, Twila Tardif, Henry Wellman

What does LIFE involve?

Bi-weekly seminars at the University of Michigan: Discuss trending issues on human development in a relaxed, encouraging atmosphere over a casual dinner. Fellows and faculty discuss topics of interest, provide mentoring, give feedback on manuscripts and presentations, and plan and prepare for upcoming academics.

Academies in the U.S. and in Europe: Twice yearly, a week-long academy is held at one of the participating institutions to promote collegial exchange between faculty and fellows. These academies consist of faculty instruction, fellow presentations (posters and talks), and a social outing. Fellows can receive a stipend to cover participation costs. The upcoming academy will be held on May 13-17, 2013 in Ann Arbor, MI at the University North Quad. You are welcome to come and meet our faculty and fellows (please contact our coordinator Linda Durham at durhamls@umich.edu)!

Research exchanges with the participating institutions in the U.S. and in Europe: LIFE fellows are encouraged to spend up to three months at participating institution (partial funding provided). This is a great and unique opportunity for students to engage in collaborative research with LIFE faculty and fellows at partner institutions.

Why LIFE?

It's a great way to meet others interested in a life course perspective on human behavior and to build an international network of colleagues!

Share your work and learn about other interdisciplinary perspectives from education, neuroscience, psychology, biology, sociology, anthropology, women's studies and more.

LIFE is wonderful! How can I join?

To apply to the LIFE program, you must be a University of Michigan PhD student (candidate status preferred). Faculty involvement is encouraged. Student applications are welcome throughout the year, although opportunities to apply are usually made at the beginning of the academic year. Applications include a letter of intent describing your interest in the LIFE program, its relevance to your research and long-term goals, and a letter of recommendation from a U-M faculty member. If you have any questions or are interested in joining LIFE, please contact Dr. Toni Antonucci (tca@umich.edu) and Dr. Patricia Reuter-Lorenz (parl@umich.edu). Website: <http://www.imprs-life.mpg.de/en/life-program>