

AT A GLANCE



17,216
UNDERGRADUATE
STUDENTS
ENROLLED

4,561 first-year students

2,452 GRADUATE
STUDENTS

Source: Registrar's Office Enrollment report #102, Fall 2016

the
largest
of U-M's
19 schools and colleges

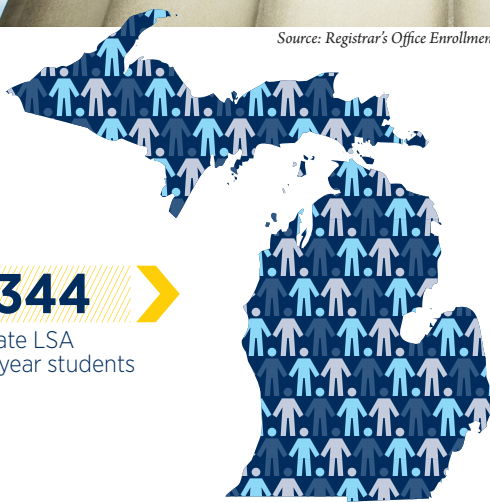
SINCE 1841, the College of Literature, Science, and the Arts (LSA) has been educating young leaders through a rich liberal arts curriculum and creating new knowledge through world-class research and scholarship. The College is built upon the cornerstone of the liberal arts: the idea that a powerful, pragmatic, broad education can transform hearts and minds, solve problems in an ever-changing world, and yield ideas and innovation across every discipline.

We offer more than **100 degree programs** in more than **75 academic departments and programs**. Through the LSA Opportunity Hub, you can make the most of what you learn by pursuing internships, finding mentors, and connecting with a broad network of employers and alumni. In fact, we have one of the largest alumni networks in the world, with more than **225,000 living LSA graduates**.

As the largest college at U-M, with **40 top-ranked programs**, LSA continues to build on an established tradition of educational excellence.

2,344

in-state LSA
first-year students



2,217

out-of-state LSA
first-year students



Source: Registrar's Office Enrollment Report #109, Fall 2016

1,897

international under-
graduate LSA students



Source: Registrar's Office
Enrollment Report #118, Fall 2016



32,322
completed LSA applications

10,328
LSA admissions granted

Source: Office of Undergraduate Admissions

LSA FIRST-YEAR STUDENT SCORES

GPA **3.9** Median (high school recalculated)

SAT **1450** Median (new scale; all sections)

ACT **31** Composite Median



62.5% of incoming LSA first-year students have a **3.9** recalculated GPA or higher

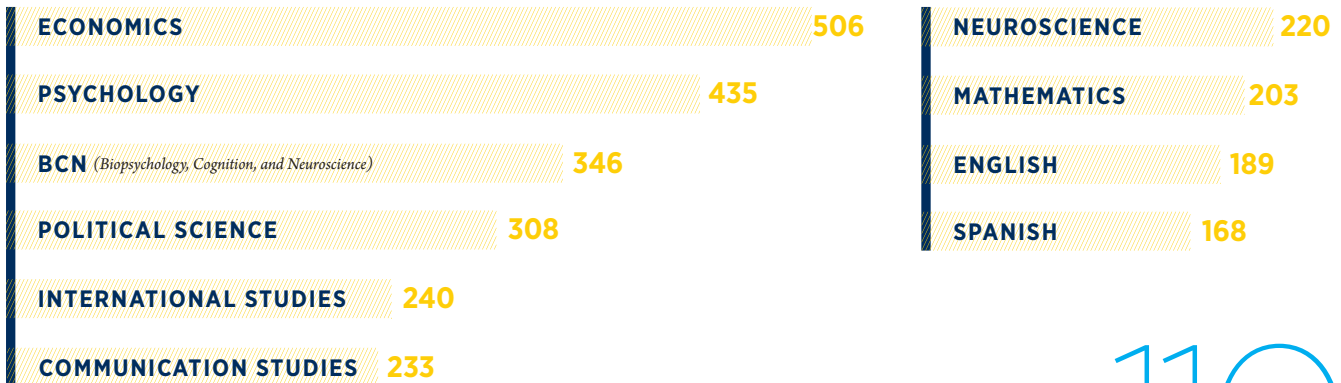


95.4% of incoming LSA first-year students have a **3.5** GPA or higher

Source: Office of Undergraduate Admissions

TOP 10 MAJORS

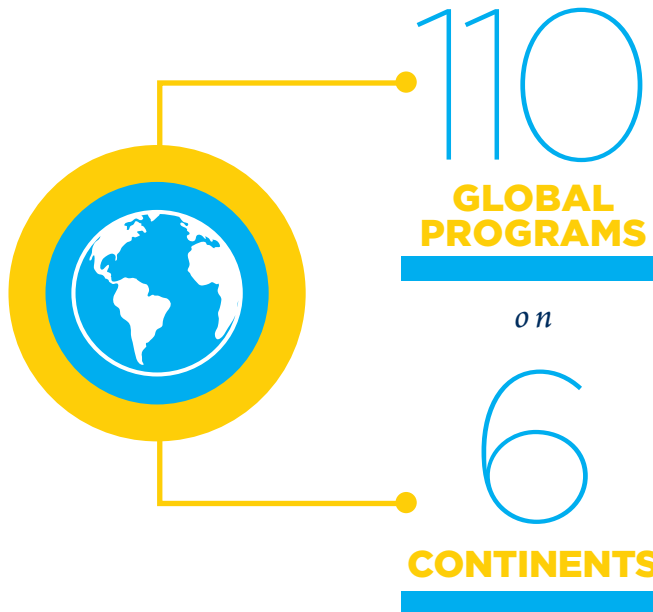
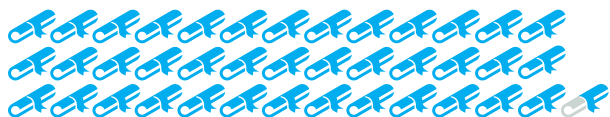
Based on the highest number of graduates, May 2016
Source: Registrar's Office Degree Report #500, May 2016



100% of LSA tenure-track faculty teach undergraduates

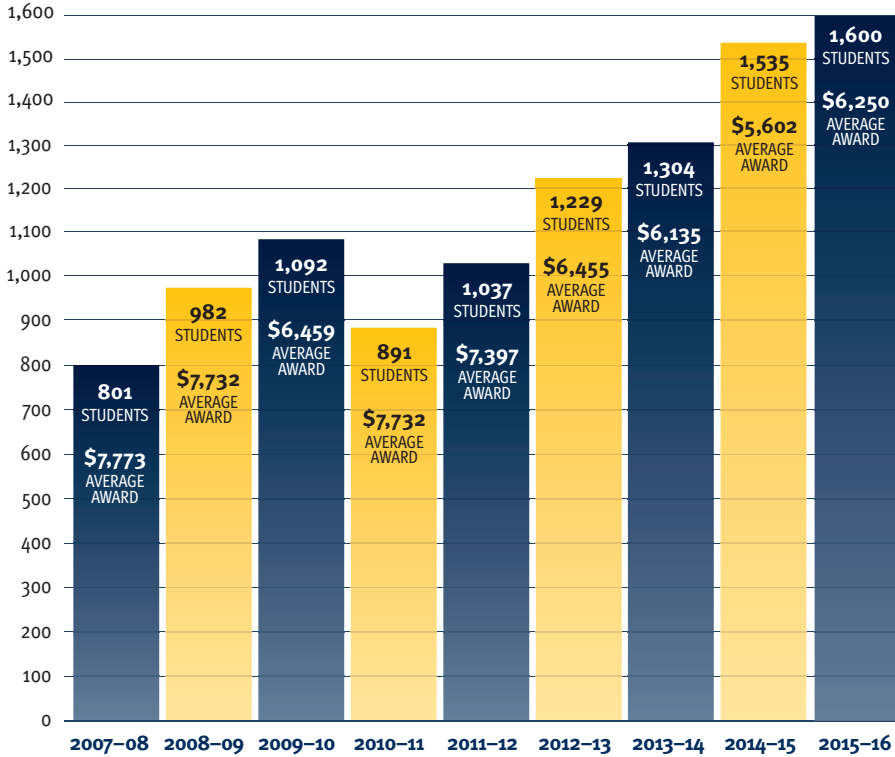
degrees:

4,006 LSA Bachelor's Degrees granted 2015-2016



SCHOLARSHIPS

ALUMNI SUPPORT FOR FINANCIAL AID *continues to increase*



Source: LSA Scholarship Office, Feb 2016

FINANCIAL AID

71% of U-M students awarded more than **\$907M** in 2015-2016

Source: Report on Disbursed Financial Aid, Office of Financial Aid, 2015-16



FINANCES

ENDOWMENT: \$1.06 BILLION

(FY17) Source: LSA Development, Marketing, and Communications

tuition and fees:

Full-Time LSA Students, 2016-2017 Academic Year

UNDERGRADUATE	lower division	upper division
	Resident	\$14,074
Non-Resident	\$45,082	\$48,270

GRADUATE	
Resident	\$21,466
Non-Resident	\$43,346



Source: U-M Office of Financial Aid

FACULTY

74 ENDOWED PROFESSORSHIPS in LSA

CURRENT LSA FACULTY MEMBERS HAVE RECEIVED NUMEROUS AWARDS AND DISTINCTIONS.

These include 2 Carnegie Foundation/CASE national professors of the year since 2005, 16 MacArthur Fellows — or “genius grant” recipients — since 1987, and 33 Guggenheim Fellows since 2007.

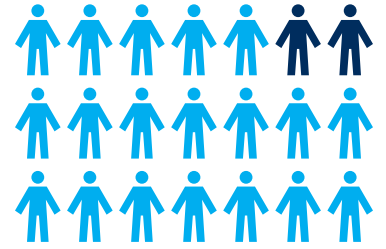
RANKINGS



LSA has **40** of the **103** TOP-RANKED DEPARTMENTS at Michigan
U.S. News & World Report 2017

In 2016-17, **21** U-M students received **FULBRIGHT FELLOWSHIPS**

19
in LSA



GRADUATE PROGRAMS

#1 RANKED
 BEHAVIORAL NEUROSCIENCE
 EXPERIMENTAL PSYCHOLOGY
 and SOCIOLOGY
 IN THE NATION

RANKED AMONG
 the **TOP**
 IN THE NATION

- American Politics
- Asian History
- Developmental Psychology
- Discrete Mathematics/
Combinatorics
- Geochemistry
- Geology
- Historical Sociology
- International Politics
- Latin American History
- Modern U.S. History

- Paleontology
- Political Methodology
- Political Science
- Psychology
- Public Finance
- Social Psychology
- Social Stratification
- Sociology of Population

U.S. News & World Report 2017 rankings of graduate programs