

**Aquatic microplastics: A unique niche for microbial communities with consequences for human and environmental health**

**Photos**

**Fernanda Ryan<sup>1</sup>, Anjali Shakya<sup>1</sup>, Jaylen Arme<sup>1</sup>, Anna DeVeaux<sup>1</sup>, Caitlin Shyu<sup>1</sup>.**

<sup>1</sup>Department of Ecology and Evolutionary Biology, University of Michigan, Ann Arbor, MI 48109

**Cordley Lake**



**Lake Michigan**



**Cordley Lake**



**Lake Michigan**



Sailboat were we collected samples in Suttons bay





North Manitou Island



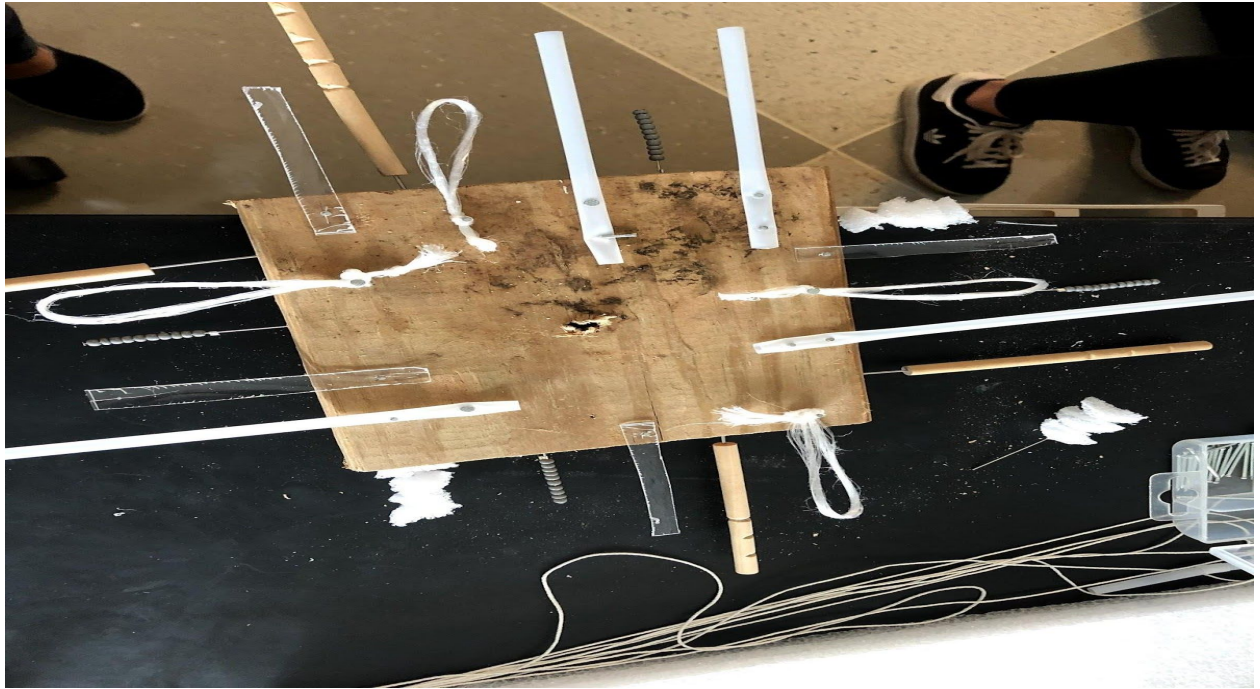
**Manta trawl**



**University of Michigan biostation accommodations**



The deployments used to measure MCC biofilms



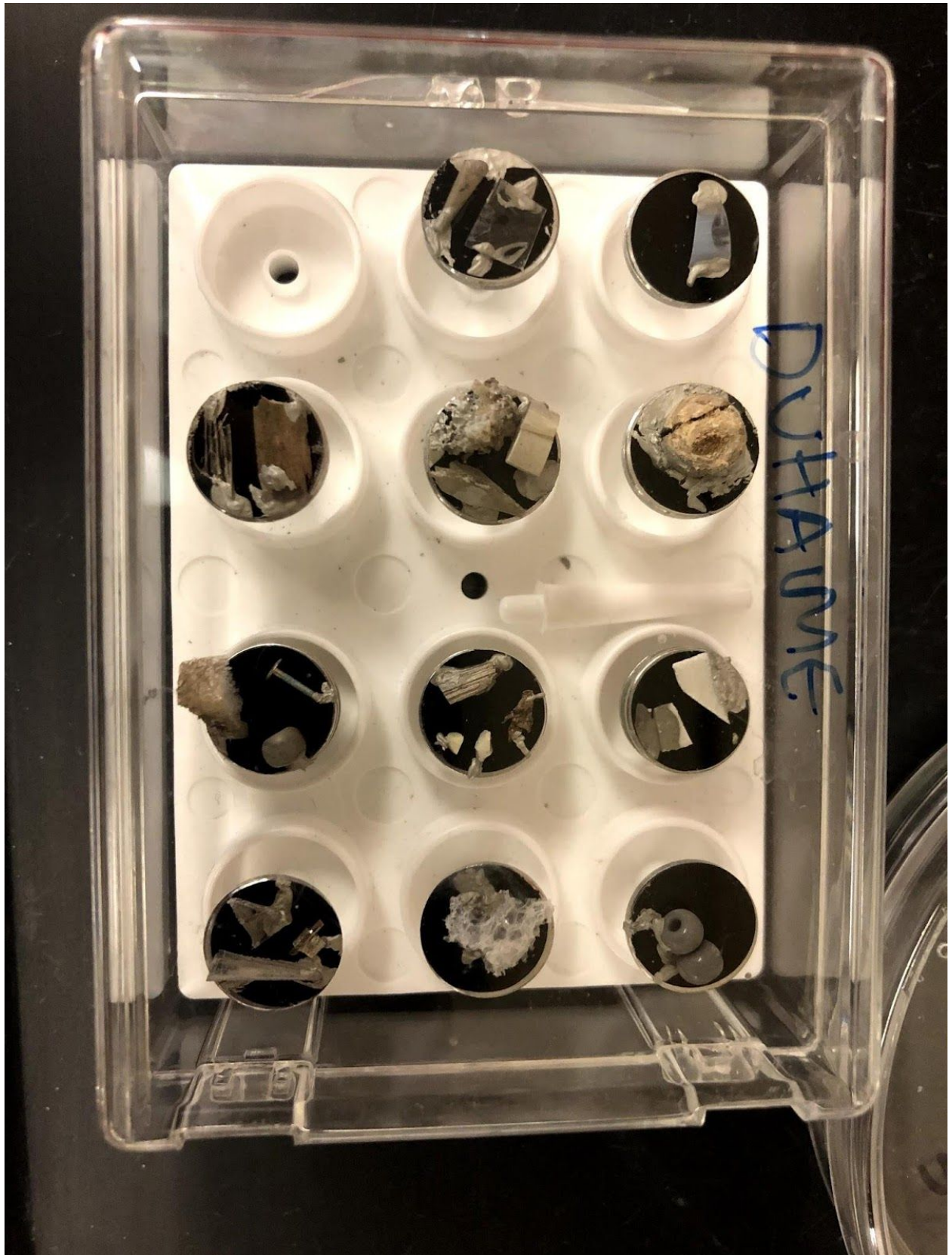


Collection day

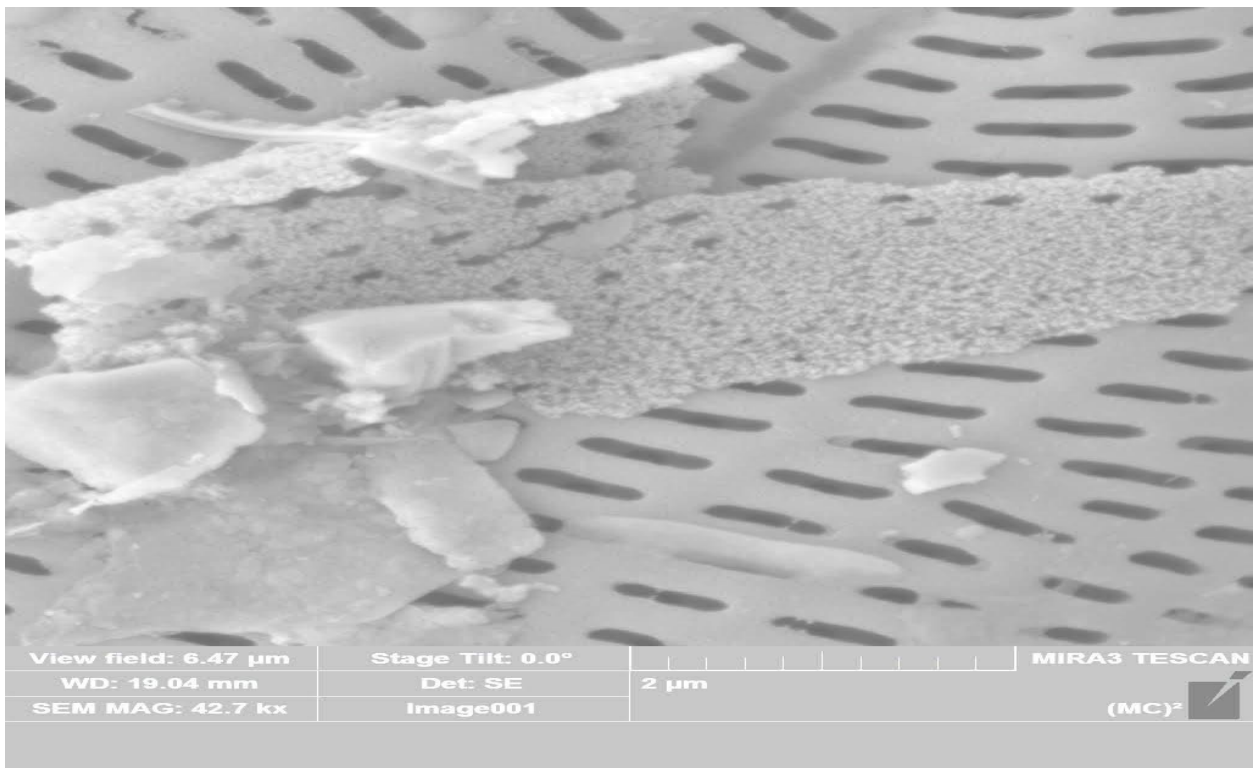
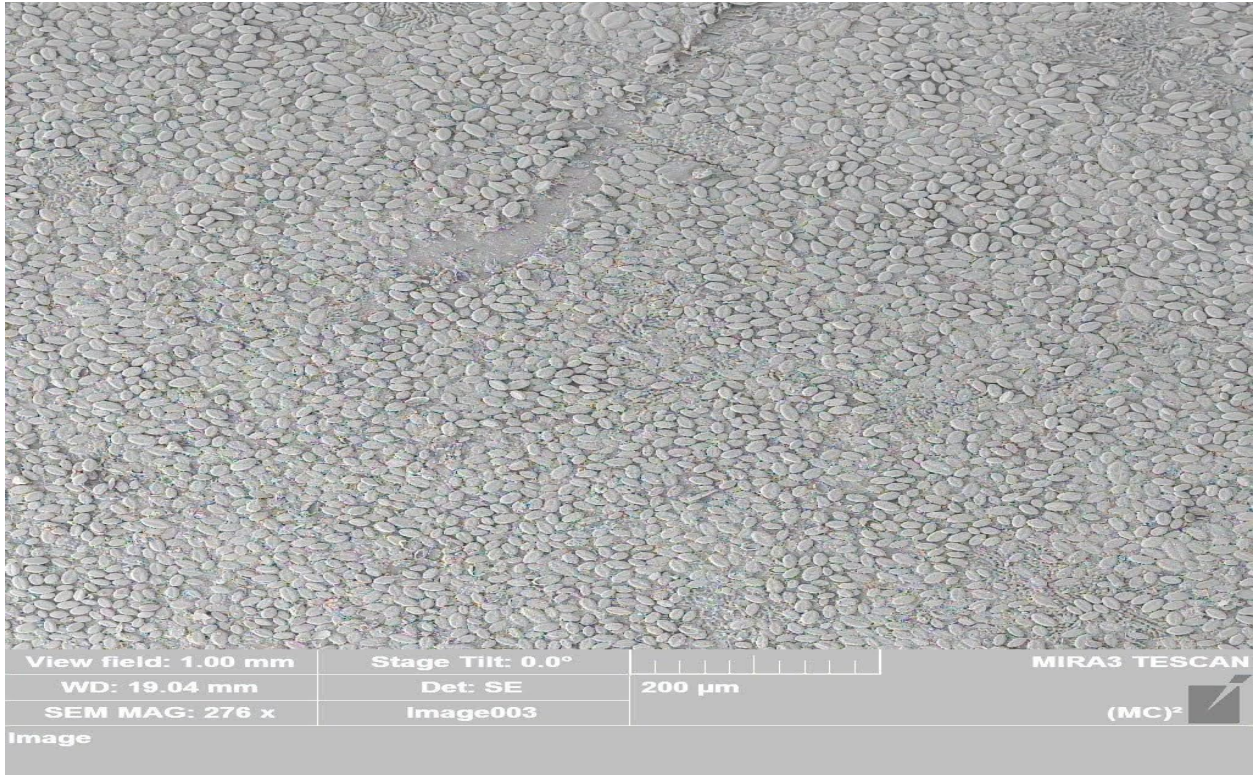


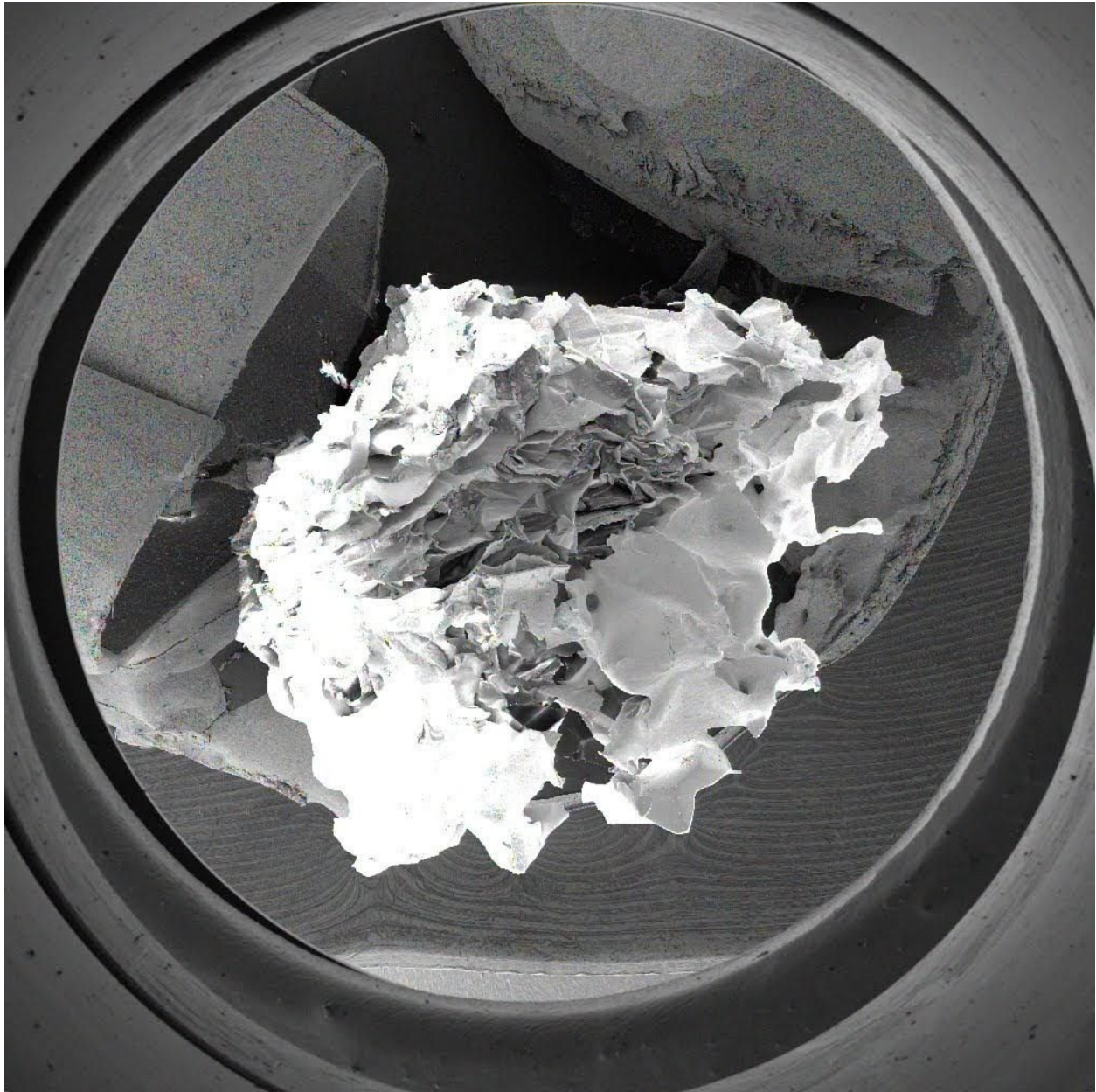


SEM sample preparation



# SEM images





View field: 10.5 mm

Stage Tilt: 0.0°

WD: 19.48 mm

Det: SE

SEM MAG: 26 x

Image005



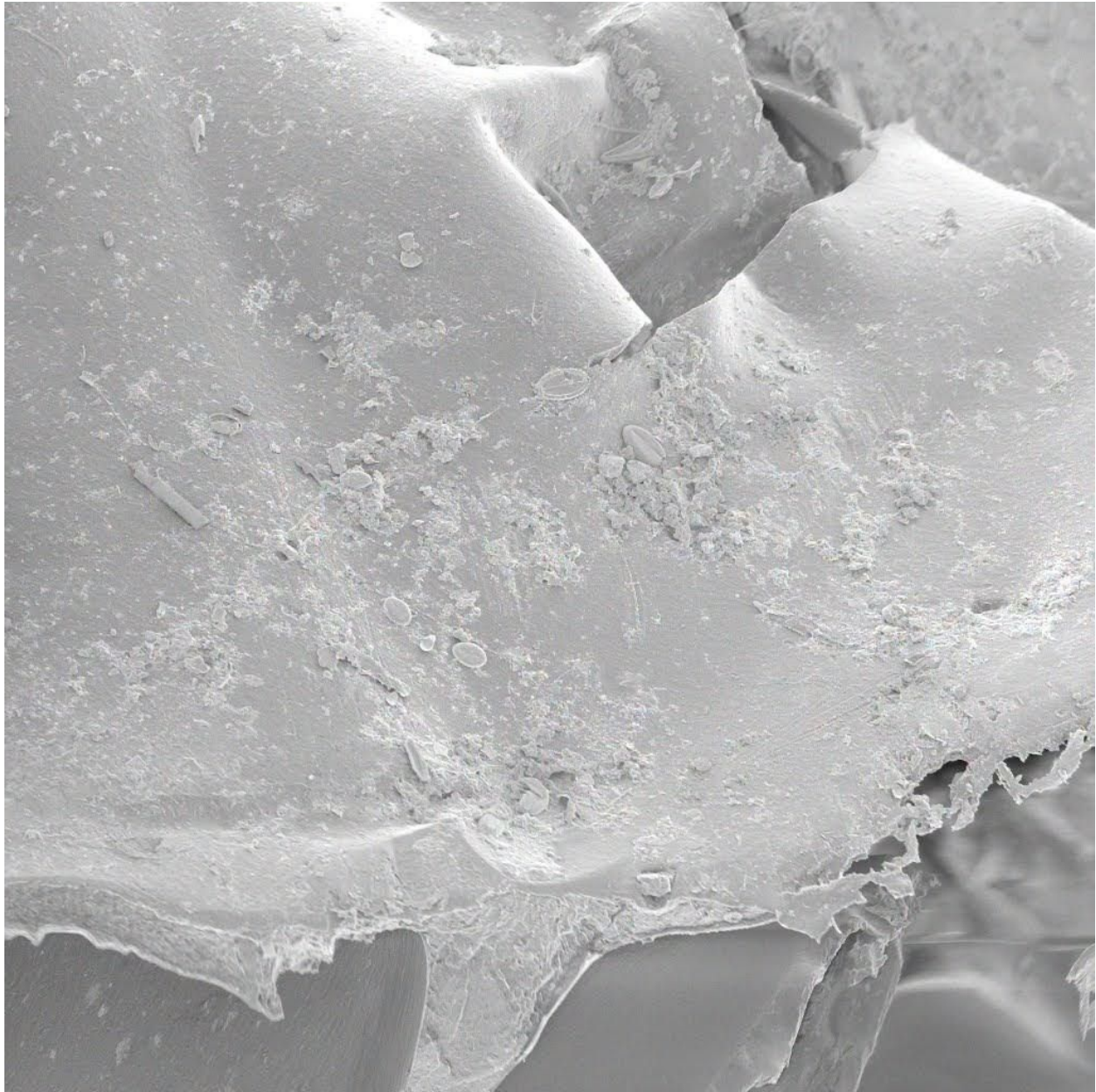
2 mm

MIRA3 TESCAN

(MC)<sup>2</sup>



Image



View field: 459  $\mu\text{m}$

Stage Tilt: 0.0°

WD: 19.44 mm

Det: SE

SEM MAG: 602 x

Image004

100  $\mu\text{m}$

MIRA3 TESCAN

(MC)<sup>2</sup>

Image



View field: 124 $\mu\text{m}$	Stage Tilt: 0.0°	 20 $\mu\text{m}$	MIRA3 TESCAN
WD: 22.00 mm	Det: SE		
SEM MAG: 2.22 kx	Image010		

Image



View field: 63.8  $\mu\text{m}$

Stage Tilt: 0.0°

MIRA3 TESCAN

WD: 21.99 mm

Det: SE

20  $\mu\text{m}$

SEM MAG: 4.33 kx

Image008

(MC)<sup>2</sup>





View field: 70.3  $\mu\text{m}$

Stage Tilt: 0.0°

MIRA3 TESCAN

WD: 21.70 mm

Det: SE

20  $\mu\text{m}$

SEM MAG: 3.93 kx

Image012

(MC)<sup>2</sup>





View field: 143 $\mu\text{m}$	Stage Tilt: 0.0°	 20 $\mu\text{m}$	MIRA3 TESCAN
WD: 21.69 mm	Det: SE		 (MC) <sup>2</sup>
SEM MAG: 1.93 kx	Image011		

Image





View field: 97.0  $\mu\text{m}$

Stage Tilt: 0.0°

MIRA3 TESCAN

WD: 20.48 mm

Det: SE

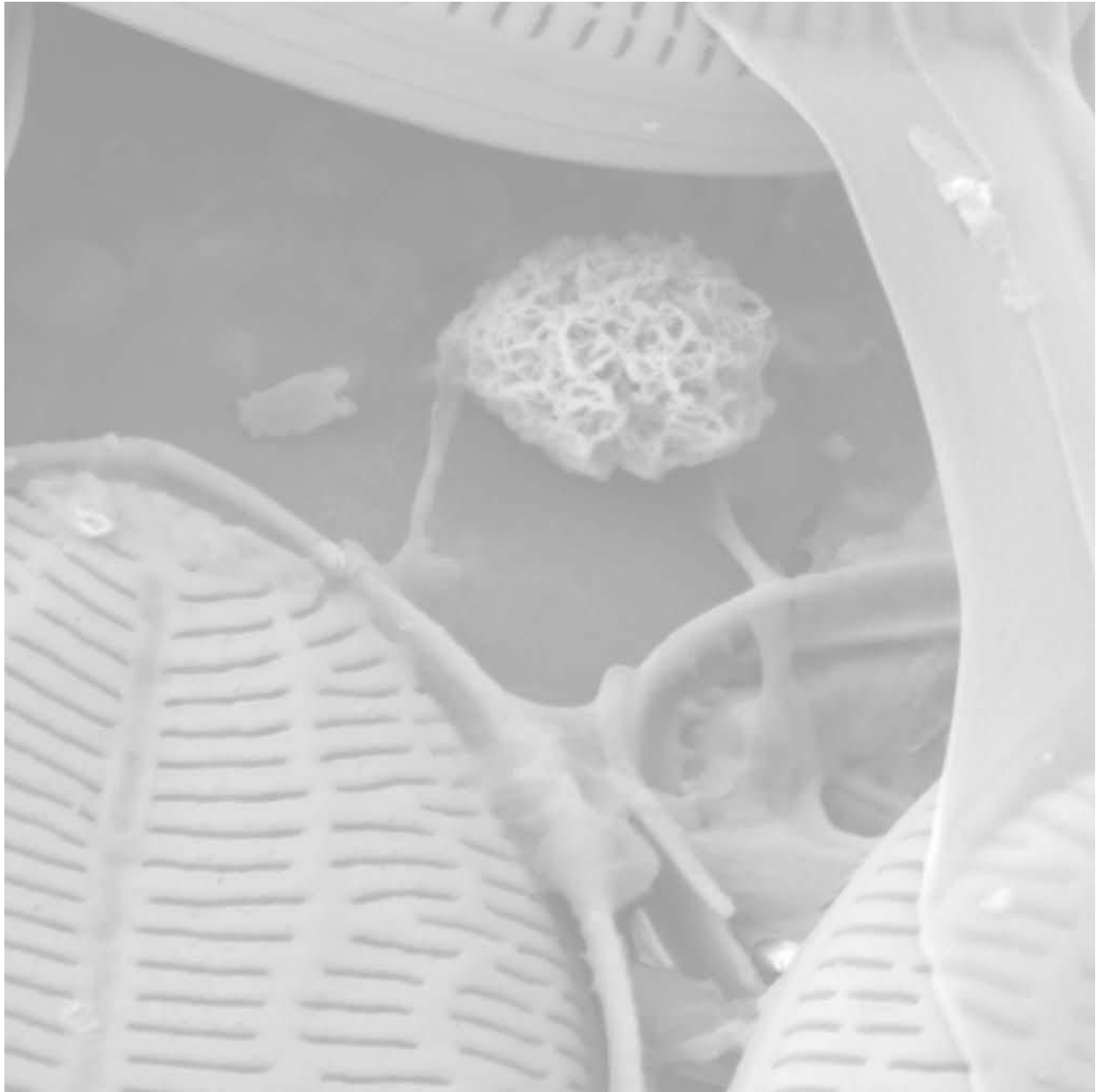
20  $\mu\text{m}$

SEM MAG: 2.85 kx

Image017

(MC)<sup>2</sup>

Image



View field: 10.1 $\mu\text{m}$	Stage Tilt: 0.0°		MIRA3 TESCAN
WD: 21.72 mm	Det: SE	2 $\mu\text{m}$	 (MC) <sup>2</sup>
SEM MAG: 27.3 kx	Image013		

Image



View field: 306  $\mu\text{m}$

Stage Tilt: 0.0°

WD: 21.46 mm

Det: SE

SEM MAG: 901 x

Image022



50  $\mu\text{m}$

MIRA3 TESCAN

(MC)<sup>2</sup>

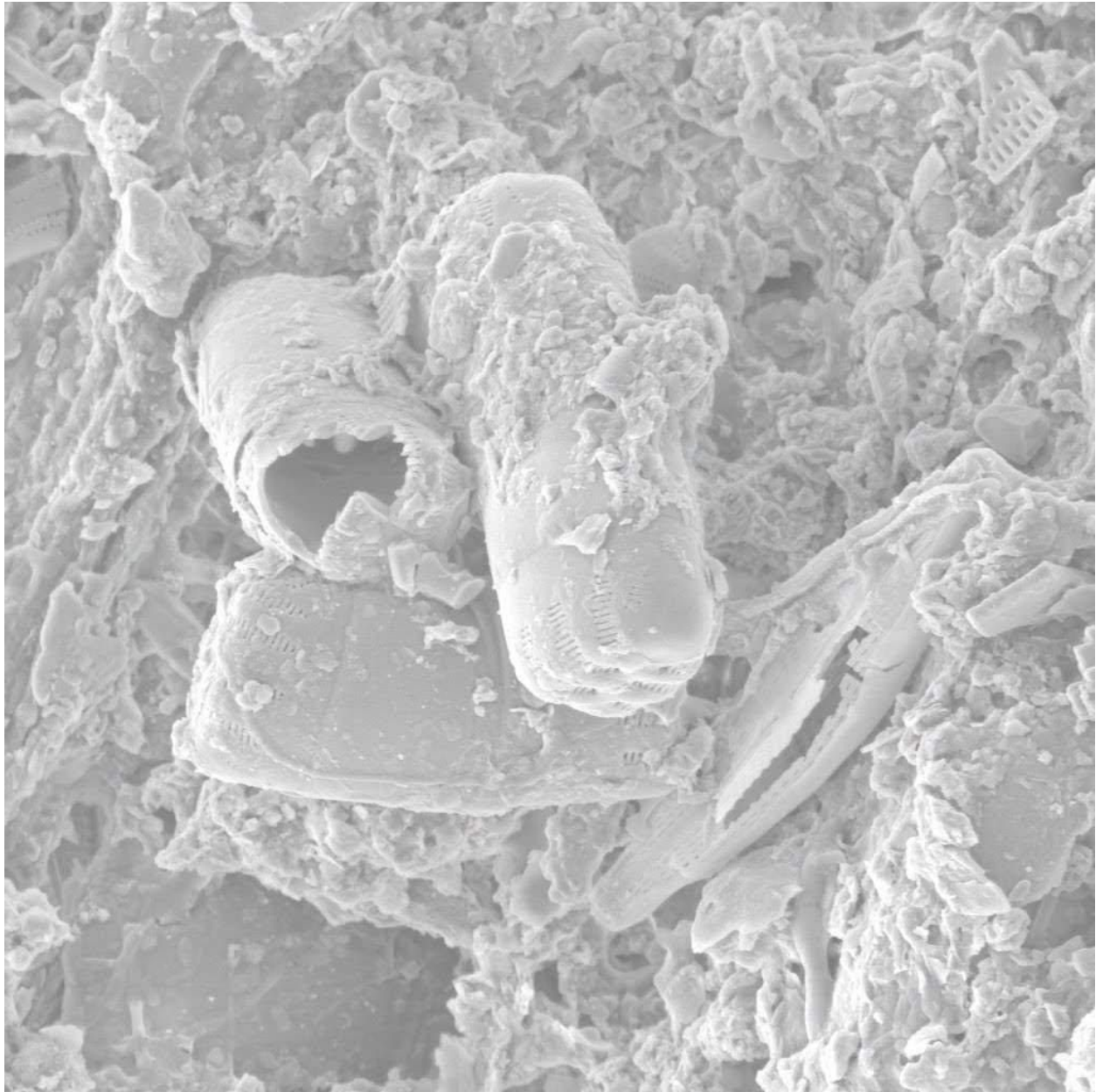


Image



View field: 203 $\mu\text{m}$	Stage Tilt: 0.0°	 50 $\mu\text{m}$	MIRA3 TESCAN
WD: 19.95 mm	Det: SE		 (MC) <sup>2</sup>
SEM MAG: 1.36 kx	Image018		

Image



View field: 38.4  $\mu\text{m}$

Stage Tilt: 0.0°

MIRA3 TESCAN

WD: 21.66 mm

Det: SE

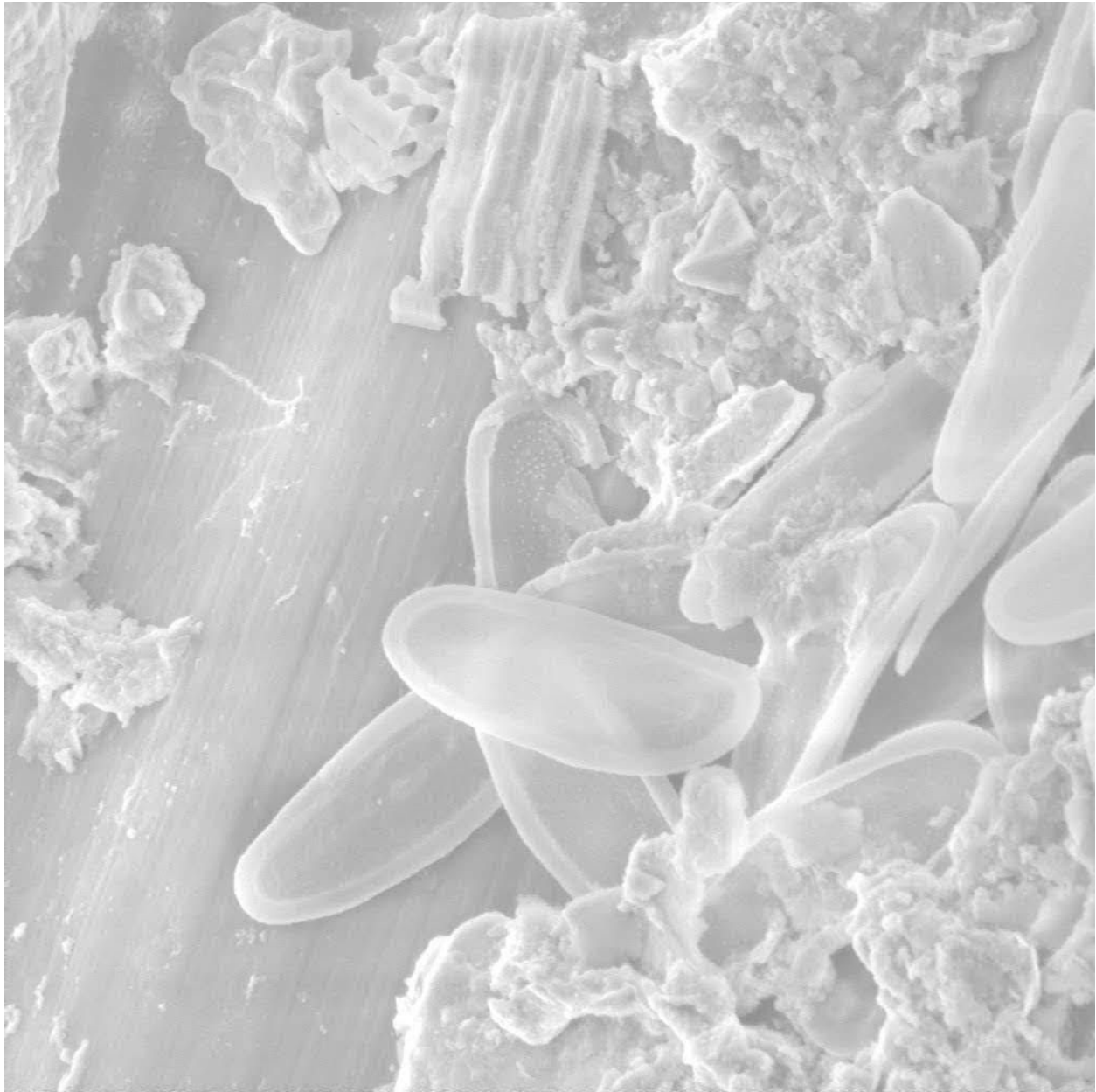
10  $\mu\text{m}$

SEM MAG: 7.19 kx

Image035

(MC)<sup>2</sup>

Image



View field: 22.7  $\mu\text{m}$

Stage Tilt: 0.0°

WD: 23.37 mm

Det: SE

SEM MAG: 12.2 kx

Image025



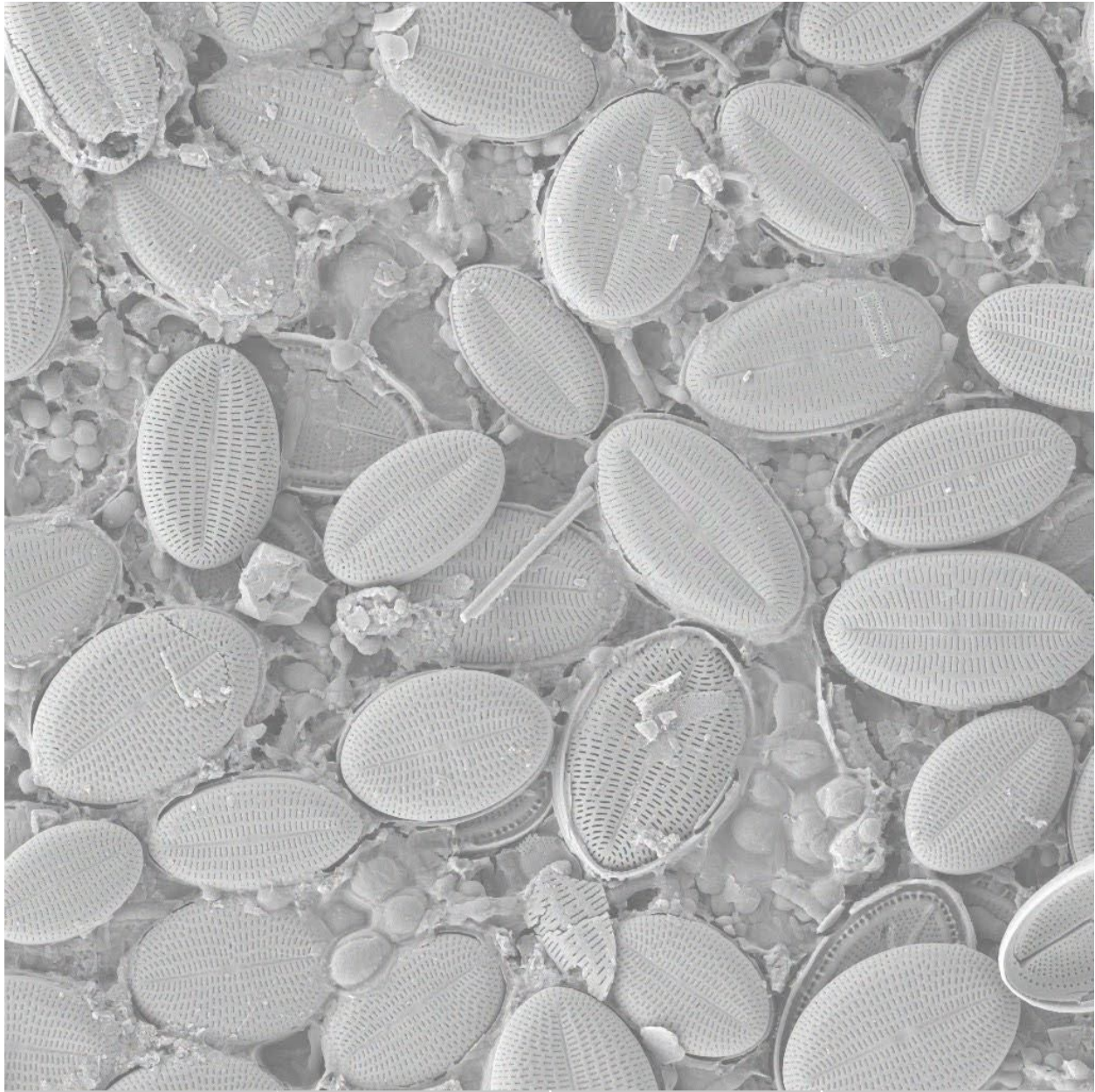
5  $\mu\text{m}$

MIRA3 TESCAN

(MC)<sup>2</sup>



Image



View field: 80.2  $\mu\text{m}$

Stage Tilt: 0.0°

WD: 19.04 mm

Det: SE

SEM MAG: 3.44 kx

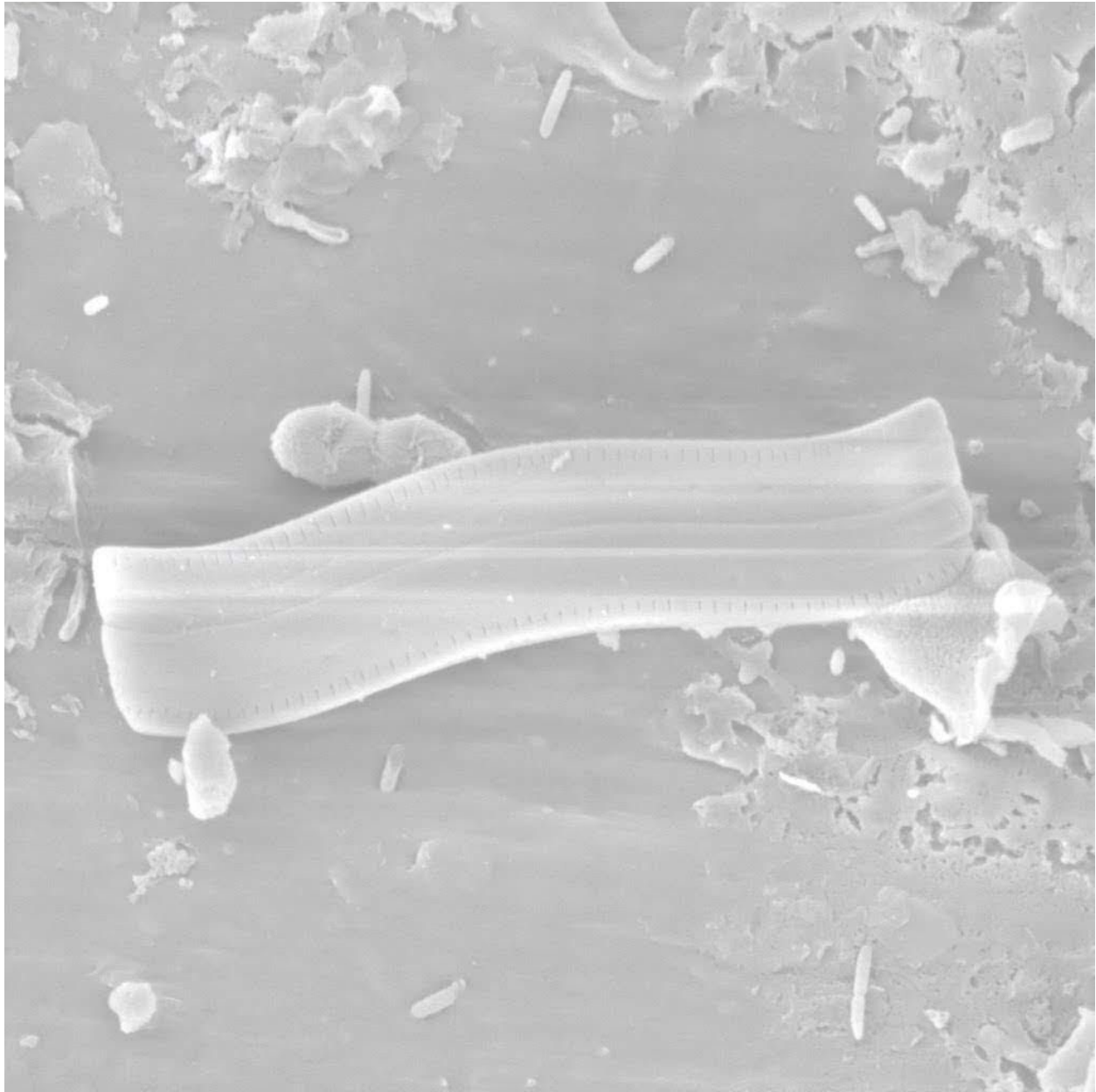
Image002

20  $\mu\text{m}$

MIRA3 TESCAN

(MC)<sup>2</sup>





View field: 24.0  $\mu\text{m}$

Stage Tilt: 0.0°

MIRA3 TESCAN

WD: 22.27 mm

Det: SE

5  $\mu\text{m}$

SEM MAG: 11.5 kx

Image047

(MC)<sup>2</sup>

Image